

The Prime Choice

SPRING CLASSIC SALE

MARCH 10, 2018 | 12:00 PM | KINGSVILLE, MO



SELLING 90 ANGUS BULLS & 75 FALL CALVING COMMERCIAL FEMALES

WELCOME!

Fellow Cattlemen,

On behalf of everyone at Valley Oaks Angus & Black Gold Genetics, I would like to invite you to our inaugural Prime Choice Spring Classic sale held at the Kingsville Livestock Auction facility in Kingsville, MO. Cattle will be available for viewing all day Friday March 9th and the auction will commence at 12:00 PM Saturday March 10th.

Both the crews of Valley Oaks Angus & Black Gold Genetics have worked tirelessly to provide you with an outstanding set of bulls that have been fed in Missouri and developed to work for the commercial producer. The EPD's on the bulls in the sale are genomically enhanced to improve the accuracy and as always, we stand behind the cattle we sell and will have an update sheet available sale day to ensure all the information is up to date.

This past year has been a year of growth for Valley Oaks and all its divisions but the largest growth has occurred at Valley Oaks Steak Company. We are in the process of building facilities to house approximately 6,000 head of cattle. The processing facility has also tripled in size and is proudly shipping beef all around the Kansas City area. Due to this rapid growth we have joined forces with Black Gold Genetics to host this sale and provide as many high-quality bulls as possible to producers in hopes they will join our buy back program. I encourage all of our customers to seriously consider taking part in our buy back program and realize the earning potential that is made available to them. This program does not just provide another market for calves, but it also allows us to work together in providing quality beef to our consumers. Valley Oaks Angus is glad to share the carcass data with customers allowing them to see what areas their cattle excel in and what areas may have room for improvement. We hope that providing this information will then make selecting a sire on sale day a little easier. If you would like more information please visit our website or feel free to contact any of the Valley Oaks staff.

If you have any questions about the sale offering please don't hesitate to give us a call. We hope to see everyone on March 10th!

Thanks,
Kyle Lynn
Manager, Valley Oaks Angus Headquarters
573-721-6382
www.valleyoaksangus.com

SALE MANAGER COMMENTS YOUR PRIME CHOICE IN SELECTING YOUR NEXT HERD BULL

On behalf of the American Angus Hall of Fame, it is certainly a pleasure to be working with the Valley Oaks Angus and Black Gold Genetics crews on an outstanding Angus event.

As you flip through the catalog, you will find an array of service-age bulls backed by the most popular AI sires and prominent cow families in the industry. These bulls have added performance with tremendous numbers and phenotype. Both programs are based on creating cattle with exceptional pounds, added carcass merits with low birth weight, calving-ease genetics and accelerated growth genetics.

Valley Oaks Angus and Black Gold Genetics have been dedicated to the Angus industry not only to grow tremendous Angus cattle but, more importantly, are in the meat industry and the farm-to-table program. They have built-in customer service plans, an outstanding buy-back program on calves sired by the elite bulls offered throughout this sale offering, as well as other customer service options that will appeal to you, the buyer.

If you have any questions, please feel free to contact either one of the farms or the American Angus Hall of Fame at (816) 532-0811.

Sincerely,



Tom Burke
(816) 520-6447



Jeremy Haag
(816) 516-1309



Kurt Schaff
(816) 853-2697



The Prime Choice

SPRING CLASSIC SALE

MARCH 10, 2018 | 12:00 PM | KINGSVILLE, MO

SALE DRY PHONES Kyle Lynn. 573-721-6382 | Jeremy Haag. 816-516-1309 | Danny Lynn. 573-721-6660 | Tom Dalbey. 404-372-0973

VALLEY OAKS ANGUS CONTACT

35004 E. McQuerry Rd. Oak Grove, MO 64075
Farm. 816-807-5690 | Kyle Lynn. 573-721-6382 | Tony Ward. 816-365-5930 | Jeff Gooden. 573-280-2351 | Justin Patrick. 573-433-6241
www.valleyoaksangus.com

BLACK GOLD GENETICS CONTACT

12251 E. 625th Ave. Robinson, IL 62454
Danny Lynn. 573-721-6660 | Kris Lynn. 573-721-6663
www.blackgoldgenetics.net

SALE LOCATION

Kingsville Livestock Auction
1630 SW 58 Hwy, Kingsville, MO 64061

SALE SCHEDULE

Friday March 9th

8 a.m. - Dusk Cattle available for viewing

Saturday March 10th

8 a.m. Cattle available for viewing

11 a.m. Complimentary Lunch

12 p.m. Sale Starts

SALE STAFF

Eddie Burks, *Auctioneer* 270-991-6398
Adam Conover, *American Angus Association* 816-676-8560
Anthony Peoples, *Missouri Cattlemens Association* 660-651-6501
Brett Sayre, *Special Assignment* 573-881-1876

CONSULTANTS

Tom Dalbey, *Dalbey Consulting* 404-372-0973
Wes Tiemann 816-244-4462

ACCOMMODATIONS

Fairfield Inn & Suites by Marriott Warrensburg

355 E Russell Ave, Warrensburg, MO 64093 - 660-422-3540

Comfort Inn Lees Summit @ Hwy 50 & Hwy 291

963 SE Oldham Pkwy, Lee's Summit, MO 64081 - 816-524-8863

SALE MANAGEMENT

American Angus Hall of Fame
Jeremy Haag 816-516-1309

ONLINE SALE BROADCASTING & BIDDING

The sale will be broadcasted live on DVAuction



LIABILITY

All persons who attend this sale do so at their own risk, legal or otherwise. The owner, sale staff, and breeders assume no liability for property loss or any accidents that may occur.

SUPPLEMENT INFORMATION

All items in this catalog are to the best of our knowledge true and up to date. Any supplement information printed or spoken otherwise from the sale block will take precedence over sale book material.

TERMS AND CONDITIONS

Cash or good check. Registration certificates will be transferred to new owner(s) after payment is made in full. All cattle will sell according to the terms and conditions of the American Angus Association, a copy of which may be picked up in the office sale day.

Bulls selling for \$3,500 or more are guaranteed against breeding injury for the first breeding season. Breeding season is defined as the 90-day period following the first turnout of the bulls. If a replacement bull is available, he will be provided, or if the buyer prefers, credit toward one bull will be given in the following year's sale, less salvage value of the injured bull. Please notify us as soon as possible should injury occur and prior to the injured bull being sold for salvage. Replacement bulls are not covered by this guarantee.

HERD HEALTH

Cattle will have proper health papers available. For out-of-state buyers, please be aware of your state's health testing requirements (if any) for imports. All bred females are ultrasound safe with calf. Ultrasound dates are approximate with no guarantee of an AI calf. We have tried to determine AI or natural calf to the best of our ability. All bulls 12 months or older will have a current BSE (Breeding Soundness Exam) and be semen tested.

INSURANCE

Steve Miller Insurance 660-939-4427

TRUCKING

Truckers deemed to be reliable will be available at the sale.

EPD'S

EPD's were pulled on January 11, 2018. **Gray shaded EPD boxes indicate those values rank in the top 20% of the breed.**

ABOUT VALLEY OAKS ANGUS

About Valley Oaks

Valley Oaks Angus has been breeding Angus cattle for 25 years in Oak Grove, MO. Our goal has been focusing on functional cattle for both the registered and commercial cattle producer. We have strived to produce females with proven performance behind them by utilizing predictable sires that combine balanced EPD values with excellent phenotypes.

Valley Oaks was founded by David and Sandra Ward in 1992 with the purchase of the Brady Land and Cattle herd from Knob Noster, Missouri. The Valley Oaks herd grew rapidly from 1993-95, held its first annual production sale in 1993, and the 5 following years. Valley Oaks had very notable staff through the early years with Bill Conley and Dallas Wolthemathe as Farm Managers and Jarrod Gillig (former NJAA president) as herdsman/show cattle manager. After many successful years of production sales and show seasons through the mid 90's and early 2000's, Valley Oaks decreased their herd size to a more manageable number once all of the children were in college. Now that the children (Tony, Clayton, and Cassie and their families) have all returned to the area, the farm and family is growing and aggressively breeding Angus cattle with performance, phenotype, and the commercial breeder all in mind.

Valley Oaks Angus Headquarters

The Valley Oaks Angus Headquarters lays on 700 acres between the towns of Grain Valley and Oak Grove Missouri. The Headquarters is home to over 150 registered cattle as well as the Valley Oaks show cattle. Our headquarters breeds approximately 150 head per year calving out half in the spring and half in the fall. We breed with industry leading bulls using artificial insemination along with embryo transfer. This helps to ensure we get the quality genetics that we strive to achieve. Valley Oaks Angus produces bulls that are DNA tested and sold annually helping to give our customers the chance to participate in our Buy Back Program. The Valley Oaks Angus Headquarters is managed by Kyle Lynn.

Valley Oaks South Farm

Our South Farm is located right outside of Clinton, Missouri and was purchased in early 2016 making it the newest addition to the Valley Oaks Angus farm. The South Farm is composed of 2,530 acres and houses approximately 900 commercial cattle. Using artificial insemination, we strive to produce quality commercial cattle with great genetics. At the South Farm, Valley Oaks calves out approximately 70% of our mother cows in the spring. With the number of cattle at the South Farm, electronic identification systems (EID) have been crucial. Our South Farm uses EID systems to track all of our cattle ensuring that we have an efficient operation. The Valley Oaks South Farm is managed by Justin Patrick.

Valley Oaks Feedlot

Approximately 20 minutes south of our headquarters you can find the Valley Oaks Feedlot. Our Feedlot is housed in Lone Jack, Missouri and has the ability to hold 1000 steers. The Valley Oaks Feedlot is state of the art giving us the opportunity to house all of our steers under roof. With the help of engineering and big fans, our cattle are continuously at a comfortable temperature. The design of our building allows our cattle to live in a stress-free environment and have a comfortable lifestyle. This helps us to produce high quality beef. The cattle at our feedlot are used to supply Valley Oaks Steak Company. The Valley Oaks Feedlot is Managed by Jeff Gooden.

YEARLING BULL MANAGEMENT CARING FOR YOUR BULLS

by Sally Northcutt

When you get your performance-tested bull(s) home, observing these management practices will result in the best reproductive performance.

FEEDING

Remember, the bull is a yearling or long yearling and still has some growing to do. Feed the young bull well. Hay and grain plus a protein supplement will be adequate. You should feed five to ten pounds of grain and one to two pounds of protein supplement in addition to full feed of good quality hay from now until the start of the breeding season. Continue to feed liberally so the bull will grow out well.

BREEDING SEASON

Plan to use the new bull in a restricted 45-to-60-day breeding season the first time. Observe him closely to be sure he is servicing and settling females.

NUMBER OF COWS

The yearling bull should be used on a minimal number of cows or heifers. The number should be governed by his age at the start of the breeding season. The following is a guide.

Bulls Age	# of Females
12 to 15 Months	10 to 12
15 to 18 Months	12 to 18
18 to 24 Months	18 to 25
24 Months and Over	25 to 35

MANAGEMENT AND HOUSING

The bull should be kept in a well-fenced lot prior to and following the breeding season. A shed or other natural windbreak should be provided. Supply plenty of clean water and minerals free-choice. Treat routinely for lice and grub worms. Run bulls together with caution. Bulls of similar age which have bred cows together will usually work. Check for any unsoundness which might develop. Test annually for Brucellosis and Leptospirosis. Vaccinate for IBR, PI3, BVD and Lepto.

VALLEY OAKS ANGUS CALF BUY BACK PROGRAM

What is the Buy Back Program?

The Valley Oaks Angus Calf Buy Back Program is designed to offer bull buyers a sales outlet for their calves. This program allows producers to save on commission, yardage and marketing while also receiving free carcass data on all calves.

Requirements:

1. Calves MUST be guaranteed to be out of a Valley Oaks Angus or Black Gold Genetics Bull and purchased at a Buy Back qualified event.
2. Calves must weigh a minimum of 600 lbs. and be a maximum age of 11 months.
3. Calves must be weaned a minimum of 30 days prior to delivery.
4. Calves must be regularly vaccinated and have birth records.
5. Calves must be Free of all Growth Hormones.
6. Calves must be primarily black hidied meaning Black or Black-Baldy.

The Process:

When a producer has calves available, they can reach out to the Valley Oaks Angus team and set up a time for a VOA representative to come and physically inspect the calves. Once inspected and approved for the VOA Calf Buy Back Program, a price will be determined based on current market prices. After being approved, calves will need to be delivered to the Valley Oaks feedlot in Lone Jack, MO. Delivery will be at the seller's sole cost. If the seller is unable to deliver VOA can assist in the delivery to the Valley Oaks feedlot. Weights and prices will be finalized upon delivery. Valley Oaks will maintain the right to DNA test any calf to confirm Valley Oaks or Black Gold genetics are present as well as ensuring the animal is guaranteed free of growth hormones. There will be a buy back maximum of 20 calves per bull per breeding season eligible to receive the premium.

Pricing:

Calves sired by a Valley Oaks Angus or Black Gold Genetics bull, that qualify for the VOA Buy Back Program, will be eligible for the average market price of their weight class. Valley Oaks will guarantee a \$.05 premium on calves sired by bulls that sold for \$4,000 or greater. If multiple bulls were purchased the average cost must equal \$4,000 to qualify for the premium. All Bull buyers of Valley Oaks Angus Bulls prior to 9/1/17 are grandfathered into the Valley Oaks Angus Calf Buy Back Program.

Rules:

1. All requirements must be met for calves to be considered for the Buy Back Program.
2. Bulls are nontransferable. Only the original bull buyer will qualify for the Buy Back Program.
3. No calves sired by a bull over the age of 6 years will qualify for the Buy Back Program.
4. All eligible calves must be sired from a first-generation Valley Oaks Angus or Black Gold Genetics Bull.
5. Bulls must be purchased at a Pre-Qualified Valley Oaks or Black Gold Genetics sale to qualify for the Buy Back Program.

Valley Oaks Angus is very excited to be offering a Calf Buy Back Program to producers! Valley Oaks Angus and Black Gold Genetics offer superior genetics and carcass value that produce excellent calf crops for producers!

For more information or if you have calves available for sale please contact Jeff Gooden, Valley Oaks Feedlot Operations Manager, at 573.280.2351 or jeff@valleyoaksangus.com.



PRIME CHOICE SPRING CLASSIC



Plattermere Weigh Up K360
Reg#: 16692552



S A V Ten Speed 3022
Reg#: 17633563



Deer Valley All In
Reg#: 17307074



V A R Generation 2100
Reg#: 17171587



EXAR Resistol 3710B
Reg#: 17434366



Basin Payweight 1682
Reg#: 17038724



V A R Discovery 2240
Reg#: 17262835



EXAR Stud 4658B
Reg#: 17908266



PA Fortitude 2500
Reg#: 17418539

REFERENCE SIRES



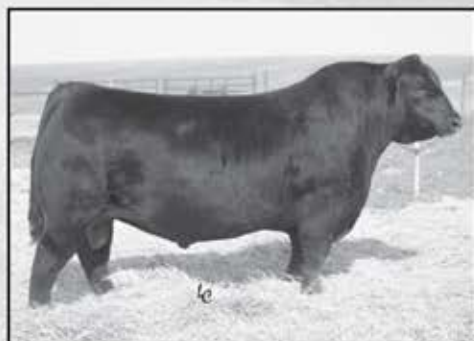
Quaker Hill Rampage 0A36
Reg#: 16925771



Connealy Top Game 1338
Reg#: 17889513



S A V Thunderbird 9061
Reg#: 16396499



R B Tour Of Duty 177
Reg#: 16984170



Rito 9Q20 of Rita 5F56 GHM
Reg#: 16408445



SandPoint Butkus X797
Reg#: 16829413



WR Journey-1X74
Reg#: 16924332



EXAR Upshot 0562B - 3014 Sire

V A R Upshot 3014
Reg#: 17455089



Connealy Black Granite
Reg#: 17028963



BLACK GOLD RITA 527 - FULL SISTER TO LOT 1



GAR/DRMCTR OBJECTIVE 9J86 - DAM OF LOT 1

1

VALLEY OAKS WEIGH UP 6030

DOB: 08/14/16 REG#: 18659249 TATTOD: 6030

Sitz Upward 307R
Plattemere Weigh Up K360
 16692552
 Barbara of Plattemere 337

Connealy Orward
 Sitz Henrietta Pride 81M
 G A R Retail Product
 Barbara of Plattemere 311

S S Objective T510 0T26
GAR/DRMCTR Objective 9J86
 16306617
 DRMCTR 111 Rita 6108

S S Traveler 6807 T510
 S S Miss Rita R011 7R8
 Rito 111 of 2536 Rito 616
 DRMCTR 2908s Design 2B02

CED	BW	WW	YW	SC	MILK	CW	MARB	REA	\$W	\$B
+5	+1.5	+70	+129	+1.14	+29	+54	+0.69	+0.69	+77.32	+160.38
Act. BW			Adj WW			Adj YW				
82			647			1148				

- A moderate birth, high-growth, high-maternal bull without sacrificing \$W and \$B. He is a deep-sided, stout-made individual that is a full brother to the record-selling female of the 2017 Black Gold Genetics annual female sale, back to the legendary DRMCTR 111 Rita 6108, who has produced over \$3 million in progeny sales to date.
- He stems from a dam that records BR 2@92, WR 2@105, %IMF 5@108.

2

VALLEY OAKS WEIGH UP 6057

DOB: 09/11/16 REG#: 18659239 TATTOD: 6057

Sitz Upward 307R
Plattemere Weigh Up K360
 16692552
 Barbara of Plattemere 337

VO 5050 New Design 32
 17305597
 G A R Ultimate 2630

Connealy Orward
 Sitz Henrietta Pride 81M
 G A R Retail Product
 Barbara of Plattemere 311

B/R New Design 036
 G A R Precision 706
 G A R Ultimate
 G A R Predestined 938

CED	BW	WW	YW	SC	MILK	CW	MARB	REA	\$W	\$B
+9	+1.0	+69	+115	-0.20	+21	+49	+0.71	+0.81	+74.13	+157.71
Act. BW			Adj WW			Adj YW				
77			658			1148				

- Calving-ease bull.
- This tremendous individual is by Plattemere Weigh Up K360 back to a daughter of GAR New Design 5050 who has a progeny production record of BR 2@94, %IMF 1@101.
- This bull has tremendous carcass EPDs without sacrificing \$W and \$B.





LOT 3



TCF RITA 7090 - DAM OF LOT 3

3

VALLEY OAKS GENERATION 7016

DOB: 02/12/17 REG#: 18776568 TATTOO: 7016

V A R Generation 2100
17171587

Connealy Consensus 7229
Blue Lilly of Conanga 16
Sandpoint Blackbird 8809
Connealy Onward
Riverbend Blackbird 4301

TCF Rita 7090
15774379

Connealy Onward
Davis Rita 2206
Connealy Lead On
Altune of Conanga 6104
B/R New Design 323
KMK Rita J352

CED	BW	WW	YW	SC	MILK	CW	MARB	REA	\$W	\$B
+5	+3.8	+66	+120	+1.49	+19	+58	+0.94	+1.08	+53.43	+181.28
Act. BW			Adj WW			Adj YW				
85			847							

- This high-growth, high-scrotal bull ranks in the Top 1% of the breed. He reads with tremendous marbling and ribeye area EPDs.
- He is an outstanding bull that comes at you in an extremely attractive package. He is long bodied, big hipped and stout made and stems from a dam that records %IMF 8@102, UREA 8@104.

4

BLACK GOLD GENERATION K536

DOB: 09/16/16 REG#: 18727799 TATTOO: K536

V A R Generation 2100
17171587

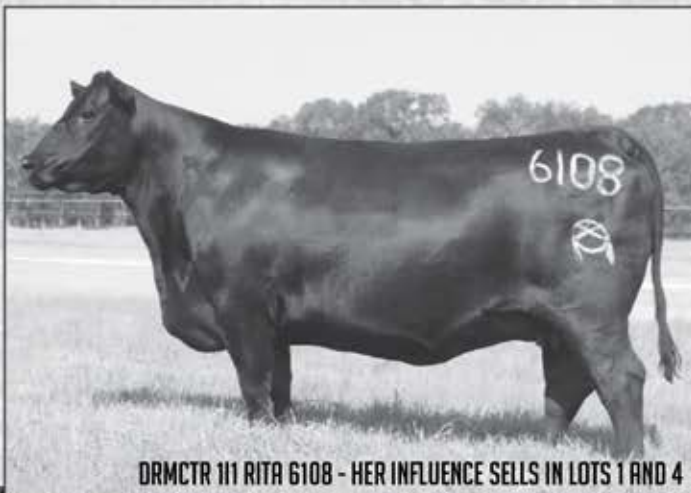
Connealy Consensus 7229
Blue Lilly of Conanga 16
Sandpoint Blackbird 8809
Connealy Onward
Riverbend Blackbird 4301

Black Gold Rita 4118
18053694

G A R Anticipation
MCC Daybreak
G A R 5050 New Design 0530
S S Objective T510 0T26
GAR/DRMCTR Objective 9J60
DRMCTR 111 Rita 6108

CED	BW	WW	YW	SC	MILK	CW	MARB	REA	\$W	\$B
+7	+1.5	+73	+118	+1.08	+23	+45	+0.86	+1.27	+73.88	+172.66
Act. BW			Adj WW			Adj YW				
82			899			1224				

- A tremendous growth bull with high carcass EPDs and is a son of VAR Generation 2100 back to the featured Rita family.
- Dam is a maternal sister to the high-selling female of the 2017 Black Gold Genetics Annual Production Sale and the third-generation dam has produced over \$3 million in progeny sales to date.
- He had an individual weaning ratio of 109, %IMF ratio of 121, UREA of 107.



DRMCTR 111 RITA 6108 - HER INFLUENCE SELLS IN LOTS 1 AND 4



LOT 4

ANGUS BULLS

5

BLACK GOLD GENERATION K456

DOB: 09/11/16 REG#: 19011968 TATTOO: K456

CED	BW	WW	YW	SC	MILK	CW	MARB	REA	SW	SB
+4	+2.0	+78	+132	+0.18	+27	+59	+1.02	+0.76	+84.08	+169.11
Act. BW			Adj. WW			Adj. YW				
55			894			1124				

6

BLACK GOLD GENERATION 676

DOB: 10/06/16 REG#: 18857597 TATTOO: 676

V A R Generation 2100
17171587

Connealy Consensus 7229
Blue Lilly of Conanga 16
Connealy Onward
Riverbend Blackbird 4301

Rita 3P6 of 9MH5 Prophet
17663979

G A R Prophet
Rita 9MH5 of Rita 5F56 Pred

Connealy Consensus 7229
Blue Lilly of Conanga 16
Connealy Onward
Riverbend Blackbird 4301
C R A Bextor 872 5205 608
G A R Objective 1885
G A R Predestined
Rita 5F56 of 1198 FD

CED	BW	WW	YW	SC	MILK	CW	MARB	REA	SW	SB
+8	+1.7	+66	+114	+0.83	+21	+49	+1.22	+0.71	+67.79	+146.89
Act. BW			Adj. WW			Adj. YW				
70			680			1123				

- These flush brothers by VAR Generation 2100 have high carcass genetics and stem from a dam that has a progeny production record of %IMF 3@123.
- Lot 6 reads with a 1.22 marbling EPD.



RRR RITA 281 - DAM OF LOT 8

7

BLACK GOLD GENERATION 658

DOB: 09/05/16 REG#: 18851971 TATTOO: 658

V A R Generation 2100
17171587

Connealy Consensus 7229
Blue Lilly of Conanga 16
Connealy Onward
Riverbend Blackbird 4301

Deer Valley Rita 9947
16577555

S A V Bismarck 5682
G A R Ext 614

Connealy Consensus 7229
Blue Lilly of Conanga 16
Connealy Onward
Riverbend Blackbird 4301
G A R Grid Maker
S A V Abigale 0451
N Bar Emulation EXT
G A R Scotch Cap 309

CED	BW	WW	YW	SC	MILK	CW	MARB	REA	SW	SB
+3	+2.7	+60	+104	+0.23	+17	+34	+0.42	+0.58	+50.60	+121.28
Act. BW			Adj. WW			Adj. YW				
69			706			1223				

- Grandam is the record-setting GAR Ext 614.
- He stems from a dam that records BR 1@95, UREA 12@101 with one daughter in production with an average nursing ratio of 110.

8

BLACK GOLD GENERATION K6017

DOB: 11/29/16 REG#: 18869999 TATTOO: K6017

V A R Generation 2100
17171587

Connealy Consensus 7229
Blue Lilly of Conanga 16
Connealy Onward
Riverbend Blackbird 4301

RRR Rita 281
17295152

EXAR Upshot 0562B
EF Rita 9242

Connealy Consensus 7229
Blue Lilly of Conanga 16
Connealy Onward
Riverbend Blackbird 4301
Sitz Upward 307R
EXAR Barbara T020
TC Total 410
G A R Retail Product 1712

CED	BW	WW	YW	SC	MILK	CW	MARB	REA	SW	SB
+12	-0.6	+55	+94	+0.91	+30	+46	+0.62	+1.17	+67.67	+153.34
Act. BW			Adj. WW			Adj. YW				
80			640							

- This bull is an outstanding calving-ease bull with double-digit calving-ease direct, negative birth, high maternal genetics and high ribeye EPD.
- He stems from a dam that records UREA 3@106.

9

BLACK GOLD GENERATION K6002

DOB: 11/01/16 REG#: 18723620 TATTOO: K6002

V A R Generation 2100
17171587

Connealy Consensus 7229
Blue Lilly of Conanga 16
Connealy Onward
Riverbend Blackbird 4301

EF Blackcap 1282
16995487

Summitcrest Complete 1P55
EF Blackcap 8156

Connealy Consensus 7229
Blue Lilly of Conanga 16
Connealy Onward
Riverbend Blackbird 4301
C F Right Design 1802
Summitcrest Elba 1M17
E&B 1680 Precision 1023
EF Blackcap 6229

CED	BW	WW	YW	SC	MILK	CW	MARB	REA	SW	SB
+6	+2.9	+58	+106	+1.36	+27	+46	+0.79	+0.94	+53.00	+148.32
Act. BW			Adj. WW			Adj. YW				
90			793			1334				

- This bull had an individual yearling ratio of 106, UREA of 103 and stems from a dam that records YR 3@101.

10

VALLEY OAKS GENERATION 7018

DOB: 02/17/17 REG#: 18775512 TATTOO: 7018

V A R Generation 2100
17171587

Connealy Consensus 7229
Blue Lilly of Conanga 16
Connealy Onward
Riverbend Blackbird 4301

Valley Oaks FRVR Lady 5012
18115345

A A R Ten X 7008 S A
Sunset Valley FRVR Lady 8924

Connealy Consensus 7229
Blue Lilly of Conanga 16
Connealy Onward
Riverbend Blackbird 4301
Mytty In Focus
A A R Lady Kelton 5551
S A V Bismarck 5682
Sunset Valley Lady 4307

CED	BW	WW	YW	SC	MILK	CW	MARB	REA	SW	SB
+7	+2.0	+80	+135	+1.83	+29	+59	+0.48	+0.84	+85.85	+167.80
Act. BW			Adj. WW			Adj. YW				
77			698							

- A featured growth bull without sacrificing maternal and carcass genetics.
- He ranks in the Top 1% for weaning weight EPD and SW, Top 2% for yearling weight EPD, and Top 3% for SB.

11

BLACK GOLD GENERATION R712

DOB: 02/04/17 REG#: 18922358 TATTOO: R712

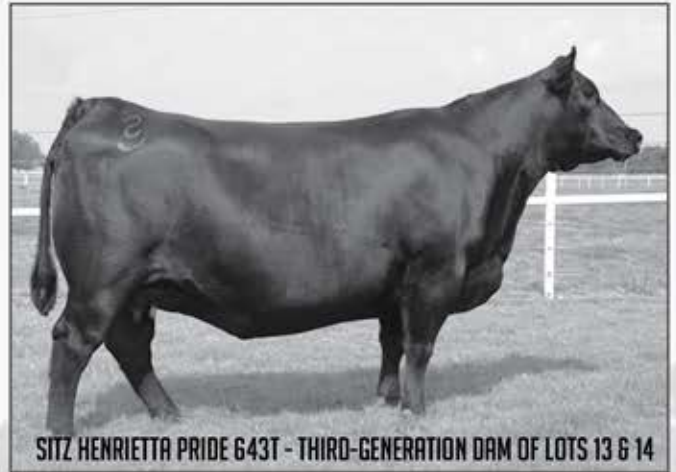
V A R Generation 2100
17171587
Connealy Consensus 7229
Sandpoint Blackbird 8809

Rita 2440 of 7068 7M97
17517131
Rito 7M97 of Rita 5F56 Pred
Rita 7068 of Rita 5FH8 Obj

Connealy Consensus
Blue Lilly of Conanga 16
Connealy Orward
Riverbend Blackbird 4301
G A R Predestined
Rita 5F56 of 1I98 FD
S S Objective T510 0T26
Rita 5FH8 of Rita 2V5 FD

CED	BW	WW	YW	SC	MILK	CW	MARB	REA	\$W	\$B
+6	+2.3	+49	+87	+0.79	+24	+41	+0.70	+0.78	+45.92	+141.67
Act. BW			Adj. WW			Adj. YW				
80			801							

• This bull had an individual weaning ratio of 107 and stems from a dam that records WR 3@105.



SITZ HENRIETTA PRIDE 643T - THIRD-GENERATION DAM OF LOTS 13 & 14

12

VALLEY OAKS GENERATION 7014

DOB: 02/09/17 REG#: 18775511 TATTOO: 7014

V A R Generation 2100
17171587
Connealy Consensus 7229
Sandpoint Blackbird 8809

44 Blackcap 0254
16961656
Sitz Upward 307R
V A R Blackcap 6062

Connealy Consensus
Blue Lilly of Conanga 16
Connealy Orward
Riverbend Blackbird 4301
Connealy Orward
Sitz Henrietta Pride 81M
Rito 1I2 of 2536 Rito 6I6
G A R 044 Traveler 2328

CED	BW	WW	YW	SC	MILK	CW	MARB	REA	\$W	\$B
+11	+0.4	+54	+97	+0.93	+26	+29	+0.55	+0.62	+59.69	+106.53
Act. BW			Adj. WW			Adj. YW				
89			758							

• Heifer Bull.
• This featured heifer bull reads with double-digit calving-ease direct, low birth weight genetics.
• He had an individual weaning ratio of 102 and stems from a dam that records WR 4@106 with one daughter in production with an average nursing ratio of 107.



LOT 13

13

BLACK GOLD DISCOVERY K376

DOB: 09/06/16 REG#: 18885430 TATTOO: K376

CED	BW	WW	YW	SC	MILK	CW	MARB	REA	\$W	\$B
+7	+2.2	+71	+132	+1.57	+24	+58	+0.86	+0.97	+70.39	+182.93
Act. BW			Adj. WW			Adj. YW				
80			831			1418				

14

BLACK GOLD DISCOVERY K416

DOB: 09/09/16 REG#: 18889175 TATTOO: K416

V A R Discovery 2240
17262835
A A R Ten X 7008 S A
Deer Valley Rita 0308

V A R Henrietta Pride 3091
17455165
Connealy Consensus 7229
PF CC&7 Henrietta Pride 1044

Mytty In Focus
A A R Lady Kelton 5551
Sitz Upward 307R
G A R Objective 2345
Connealy Consensus
Blue Lilly of Conanga 16
SydGen C C & 7
Sitz Henrietta Pride 643T

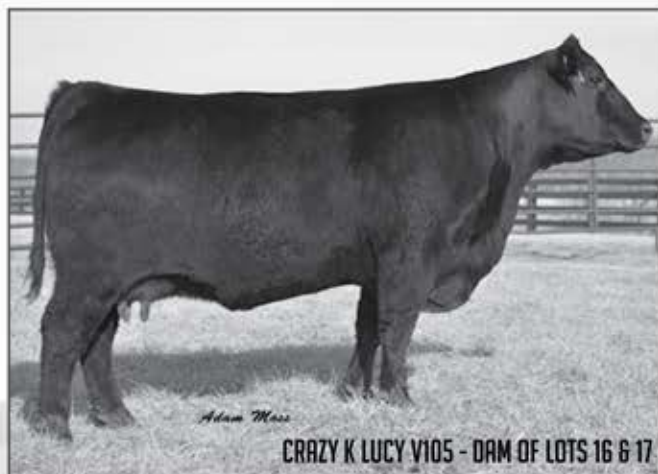
CED	BW	WW	YW	SC	MILK	CW	MARB	REA	\$W	\$B
+10	+1.3	+71	+125	+1.76	+26	+56	+1.10	+0.72	+72.77	+182.23
Act. BW			Adj. WW			Adj. YW				
83			843			1403				

• These featured flush brothers are high-numbered, tremendous breeding pieces that have impressive calving-ease genetics and read with outstanding spread from birth to yearling.
• They stem from a top donor female in the Black Gold program who has a progeny production record of UREA 4@101.



LOT 14

ANGUS BULLS



Adrian Moss
CRAZY K LUCY V105 - DAM OF LOTS 16 & 17

15 VALLEY OAKS DISCOVERY 6051

DOB: 09/07/16 REG#: 18649271 TATTOO: 6051

V A R Discovery 2240
17262835
Deer Valley Rita 0308

BJ Reserve 4171
18189516
BJ 5050 New Design 2126

Mytty In Focus
A A R Lady Kelton 5551
Sitz Upward 307R
G A R Objective 2345
B/R New Day 454
Sandpoint Blackbird 8809
G A R New Design 5050
BJ Objective 8218

CED	BW	WW	YW	SC	MILK	CW	MARB	REA	\$W	\$B
+10	-0.8	+58	+100	+0.50	+27	+34	+0.80	+0.65	+57.87	+133.68
Act. BW			Adj. WW			Adj. YW				
65			712			1181				

- Heifer Bull.
- He had an individual birth ratio of 91, weaning ratio of 105 and stems from a dam that records WR 1@105.

16 BLACK GOLD DISCOVERY 663

DOB: 09/10/16 REG#: 18851973 TATTOO: 663

CED	BW	WW	YW	SC	MILK	CW	MARB	REA	\$W	\$B
+8	+1.0	+67	+116	+1.41	+23	+45	+0.82	+0.65	+72.70	+154.05
Act. BW			Adj. WW			Adj. YW				
83			878			1326				

17 BLACK GOLD DISCOVERY 667

DOB: 09/12/16 REG#: 18851974 TATTOO: 667

V A R Discovery 2240
17262835
Deer Valley Rita 0308

Crazy K Lucy V105
17116854
Basin Lucy 3829

Mytty In Focus
A A R Lady Kelton 5551
Sitz Upward 307R
G A R Objective 2345
Connealy Consensus
Blue Lilly of Conanga 16
C A Future Direction 5321
Basin Lucy 178E

CED	BW	WW	YW	SC	MILK	CW	MARB	REA	\$W	\$B
+9	+1.9	+62	+116	+1.45	+28	+53	+0.77	+0.63	+61.03	+162.61
Act. BW			Adj. WW			Adj. YW				
74			766			1134				

- These featured flush brothers by VAR Discovery stem back to the legendary and record-selling Basin Lucy 178E.
- Dam has a progeny production record of WR 2@109, %IMF 7@104, UREA 7@101 with three daughters in production with an average nursing ratio of 104.

18 BLACK GOLD DISCOVERY 664

DOB: 09/10/16 REG#: 18851975 TATTOO: 664

V A R Discovery 2240
17262835
Deer Valley Rita 0308

GAR/DRMCTR Objective 9J86
16306617
DRMCTR 111 Rita 6108

Mytty In Focus
A A R Lady Kelton 5551
Sitz Upward 307R
G A R Objective 2345
S S Traveler 6807 T510
S S Miss Rita R011 7R8
Rito 111 of 2536 Rito 686
DRMCTR 2908s Design 2B02

CED	BW	WW	YW	SC	MILK	CW	MARB	REA	\$W	\$B
+5	+2.5	+61	+106	+0.87	+27	+25	+1.22	+0.47	+59.42	+110.48
Act. BW			Adj. WW			Adj. YW				
75			811			1293				

- This featured high marbling bull is a maternal brother to the top selling female of the 2017 Black Gold Genetics Annual Production Sale and grandam is a \$3 million producing female.
- This bull had an IMF ratio of 135 and stems from a dam that records BR 2@92, WR 2@105, %IMF 5@108.

19 BLACK GOLD DISCOVERY K6011

DOB: 11/24/16 REG#: 18889997 TATTOO: K6011

V A R Discovery 2240
17262835
Deer Valley Rita 0308

G A R 5050 New Design 2553
17623322
G A R Progress 830

Mytty In Focus
A A R Lady Kelton 5551
Sitz Upward 307R
G A R Objective 2345
B/R New Design 036
G A R Precision 706
G A R Progress
G A R 111 Rito 3346

CED	BW	WW	YW	SC	MILK	CW	MARB	REA	\$W	\$B
+10	+1.1	+74	+132	+1.31	+25	+47	+0.87	+0.67	+73.51	+151.51
Act. BW			Adj. WW			Adj. YW				
80			622							

- Heifer Bull.
- A tremendous spread bull from birth to yearling. He is a high scrotal bull that ranks in the Top 3% for \$W and Top 10% for \$Beef.
- He stems from a dam that records %IMF 1@101.

20

BLACK GOLD DISCOVERY K6015

DOB: 11/28/16 REG#: 18889998 TATTOO: K6015

V A R Discovery 2240

17262835

A A R Ten X 7008 S A
Deer Valley Rita 0308

G A R Objective 1067

15823093

S S Objective T510 0T26
G A R Retail Product 2195Mytty In Focus
A A R Lady Kelton 5551
Sitz Upward 307R
G A R Objective 2345
S S Traveler 6807 T510
S S Miss Rita R011 7R8
G A R Retail Product
G A R 1407 New Design 1223

CED	BW	WW	YW	SC	MILK	CW	MARB	REA	\$W	\$B
+12	-1.8	+54	+99	+1.05	+33	+26	+0.92	+0.50	+57.73	+112.77
Act. BW			Adj WW			Adj YW				
65			590							

• Heifer Bull.

• One of the top calving-ease bulls of this year's event with high marbling genetics. He is a son of VAR Discovery 2240 back to a dam that records BR 2@97, %IMF 18@107 with nine daughters in production with an average nursing ratio of 104.

21

BLACK GOLD DISCOVERY K712

DOB: 01/29/17 REG#: 18919873 TATTOO: K712

V A R Discovery 2240

17262835

A A R Ten X 7008 S A
Deer Valley Rita 0308

BGG Evergreen Erica 4143

18053696

Rito 9Q13 of Rita 5F56 GHM
Bridges Predestined 143Mytty In Focus
A A R Lady Kelton 5551
Sitz Upward 307R
G A R Objective 2345
Gardens Highmark
Rita 5F56 of 1198 FD
G A R Predestined
Bridges Evergreen Erica 4139

CED	BW	WW	YW	SC	MILK	CW	MARB	REA	\$W	\$B
+3	+3.7	+84	+155	+1.84	+18	+68	+1.11	+0.56	+64.01	+186.66
Act. BW			Adj WW			Adj YW				
80			701							

• One of the high weaning and yearling weight EPD bulls coupled with tremendous marbling EPD.
• This featured son of VAR Discovery stems back to the featured Evergreen Erica family and reads with tremendous breeding potential.

22

BLACK GOLD DISCOVERY 720

DOB: 02/03/17 REG#: 18919067 TATTOO: 720

V A R Discovery 2240

17262835

A A R Ten X 7008 S A
Deer Valley Rita 0308

BoBo Blackbird 0020

16763614

Summitcrest Complete 1P55
Riverbend Blackbird 4058Mytty In Focus
A A R Lady Kelton 5551
Sitz Upward 307R
G A R Objective 2345
C F Right Design 1802
Summitcrest Elba 1M17
Bon View New Design 1407
Davis Yr Blackbird 558H

CED	BW	WW	YW	SC	MILK	CW	MARB	REA	\$W	\$B
+3	+2.0	+76	+141	+2.04	+31	+53	+0.98	+0.74	+78.67	+158.04
Act. BW			Adj WW			Adj YW				
65			724							

• An outstanding son of VAR Discovery 2240 that stems from a top producing female in the Black Gold program that has a progeny production record of BR 4@99, WR 4@104, YR 2@105, %IMF 15@104 with seven daughters in production with an average nursing ratio of 102.

23

BLACK GOLD DISCOVERY 725

DOB: 02/11/17 REG#: 18955574 TATTOO: 725

V A R Discovery 2240

17262835

A A R Ten X 7008 S A
Deer Valley Rita 0308

2 Bar 28 Ambush 1735

16895691

B/R Ambush 28
2 Bar Mile High 9360Mytty In Focus
A A R Lady Kelton 5551
Sitz Upward 307R
G A R Objective 2345
Rockn D Ambush 1531
B/R Ruby of Tiffany 8250
Riverbend Mile High 3718
2 Bar Objective 863

CED	BW	WW	YW	SC	MILK	CW	MARB	REA	\$W	\$B
+0	+3.1	+74	+132	+0.63	+17	+55	+1.16	+0.62	+52.70	+173.32
Act. BW			Adj WW			Adj YW				
85			769							

• A high-marbling, high-growth, high-\$Beef bull that stems from a dam that records %IMF 13@105, UREA 13@101 with three daughters in production with an average nursing ratio of 101.





24 **BLACK GOLD DISCOVERY K626**
 DOB: 09/21/16 REG#: 18851967 TATTOO: K626

V A R Discovery 2240
 17262835
 Deer Valley Rita 0308

G A R Prophet
Rita 3P25 of N2220 Prophet
 17633980 G A R Ultimate N2220

Mytty In Focus
 A A R Lady Kelton 5551
 Sitz Upward 307R
 G A R Objective 2345
 C R A Bextor 872 5205 608
 G A R Objective 1885
 G A R Ultimate
 G A R Predestined 3826

CED	BW	WW	YW	SC	MILK	CW	MARB	REA	SW	SB
+9	-0.5	+82	+144	+0.81	+22	+44	+1.33	+0.78	+82.36	+146.16
Act. BW				Adj. WW			Adj. YW			
62				877			1283			

- Heifer Bull.
- A heifer bull with high marbling genetics that reads with a tremendous pedigree.
- He had an individual weaning ratio of 106, yearling ratio of 102, %IMF ratio of 142 and stems from a dam that records BR 3@96, WR 2@113, YR 2@103, %IMF 2@137, UREA 2@103.

25 **BLACK GOLD DISCOVERY K716**
 DOB: 10/03/16 REG#: 18851968 TATTOO: K716

V A R Discovery 2240
 17262835
 Deer Valley Rita 0308

G A R Bextor 268
 16292178 G A R Objective 1885

A A R Ten X 7008 S A
 Mytty In Focus
 A A R Lady Kelton 5551
 Sitz Upward 307R
 G A R Objective 2345
 B A R Ext Traveler 205
 Cra Lady Jaye 608 498 S Easy
 S S Objective T510 0T26
 G A R 1407 New Design 2232

CED	BW	WW	YW	SC	MILK	CW	MARB	REA	SW	SB
+10	+1.0	+77	+137	+0.69	+31	+48	+0.99	+0.49	+84.17	+149.82
Act. BW				Adj. WW			Adj. YW			
80				787			1299			

- Heifer Bull.
- Dam is a full sister to the Select Sires AI sire, GAR Prophet.
- He had an individual %IMF ratio of 130 and stems from a dam that records WR 1@105, YR 1@104. Here is an outstanding prospect.



G A R OBJECTIVE 1885 - GRANDAM OF LOT 25

26

BLACK GOLD EMPIRE K676

DOB: 09/25/16 REG#: 18848800 TATTOO: K676

V A R Empire 3037
17455111

A A R Ten X 7008 S A
EXAR New Design 4212

Deer Valley Rita 3335
17643797

PA Power Tool 9108
Deer Valley Rita 0208

Mytty In Focus
A A R Lady Kelton 5551
Rito 112 of 2536 Rito 616
G A R New Design 1200
G A R Predestined
Shamrocks Beebee Queen 3095
Sitz Upward 307R
G A R Ext 614

CED	BW	WW	YW	SC	MILK	CW	MARB	REA	SW	SB
+14	-0.2	+61	+121	+0.49	+30	+65	+0.46	+0.96	+68.74	+180.02
Act. BW			Adj. WW			Adj. YW				
80			854			1422				

- Heifer Bull.
- This heifer bull ranks in the Top 1% of the breed for \$Beef.
- He had an individual weaning ratio of 104, yearling ratio of 114, UREA of 109 and stems from a dam that records WR 1 @ 104, YR 1 @ 114, UREA 1 @ 109.



LOT 26

G A R EXT 614 - THIRD-GENERATION DAM OF LOT 26



27

BLACK GOLD EMPIRE K646

DOB: 09/21/16 REG#: 18848798 TATTOO: K646

V A R Empire 3037
17455111

A A R Ten X 7008 S A
EXAR New Design 4212

Black Gold Rita 354
17867448

EXAR Upshot 0562B
G A R Retail Product H536

Mytty In Focus
A A R Lady Kelton 5551
Rito 112 of 2536 Rito 616
G A R New Design 1200
Sitz Upward 307R
EXAR Barbara T020
G A R Retail Product
G A R 1407 New Design 1942

CED	BW	WW	YW	SC	MILK	CW	MARB	REA	SW	SB
+6	+2.8	+68	+124	+0.93	+23	+52	+0.51	+0.89	+59.85	+169.13
Act. BW			Adj. WW			Adj. YW				
82			877			1413				

- Balanced Trait Leader that blends VAR Empire, EXAR Upshot and Retail Product into a powerful genetic package.
- He had an individual weaning ratio of 106, yearling ratio of 113, UREA of 116 and stems from a dam that records WR 1 @ 106, YR 1 @ 113, UREA 1 @ 116.



G A R 1407 NEW DESIGN 1942 - THIRD-GENERATION DAM OF LOT 27

28

VALLEY OAKS TEN SPEED 7008

DOB: 02/06/17 REG#: 1877242 TATTOO: 7008

S A V Ten Speed 3022
17633563

A A R Ten X 7008 S A
S A V Madame Pride 1134

VO Pollyanna 3022
17721380

BC Justice 112-0
Limestone Pollyanna W602

Mytty In Focus
A A R Lady Kelton 5551
S A V Bismarck 5682
S A V Madame Pride 9100
BC Pure Pride 327-8
B C Just Right E Belle 112
BC Big Daddy 702-5
O C C Pollyanna 682M

CED	BW	WW	YW	SC	MILK	CW	MARB	REA	SW	SB
+10	+0.0	+51	+95	+0.24	+31	+42	+0.62	+0.50	+60.75	+128.66
Act. BW			Adj. WW			Adj. YW				
83			766							

- Heifer Bull.
- A standout individual with tremendous eye appeal, balance and quality. Here is an outstanding individual that stems from the GENEX Beef AI sire, SAV Ten Speed 3022, back to the Pollyanna family.
- He had an individual birth ratio of 99, weaning ratio of 104 and stems from a dam that records WR 2 @ 111, YR 1 @ 108.



LOT 28

ANGUS BULLS



29

VALLEY OAKS TEN SPEED 6036

DOB: 08/18/16 REG#: 18643982 TATTOO: 6036

A A R Ten X 7008 S A
S A V Ten Speed 3022
 17633563 S A V Madame Pride 1134

S A V 004 Predominant 4438
S A V Blackcap May 6320
 15903989 S A V May 7238

Mytty In Focus
 A A R Lady Kelton 5551
 S A V Bismarck 5682
 S A V Madame Pride 9100
 S A V 8180 Traveler 004
 S A V Emblynette 1182
 Leachman Right Time
 S A R Prospector May 9124

CED	BW	WW	YW	SC	MILK	CW	MARB	REA	SW	SB
+5	+2.7	+61	+96	+1.69	+21	+34	+0.30	+0.69	+57.29	+102.93
Act. BW			Adj. WW			Adj. YW				
89			654			1057				

- This direct son of the GENEX Beef AI sire, SAV Ten Speed 3022, stems back to a featured Blackcap May female who is a maternal sister to one of the all time high income producing females in Schaff Angus Valley history, SAV May 2397, who is in turn the mother of SAV Blackcap May 4136 and SAV Angus Valley 1867.
- Dam has a progeny production record of WR 1 @ 105, UREA 21 @ 101 with six daughters in production with an average nursing ratio of 102.



30

BLACK GOLD RESISTOL K286

DOB: 08/22/16 REG#: 18858452 TATTOO: K286

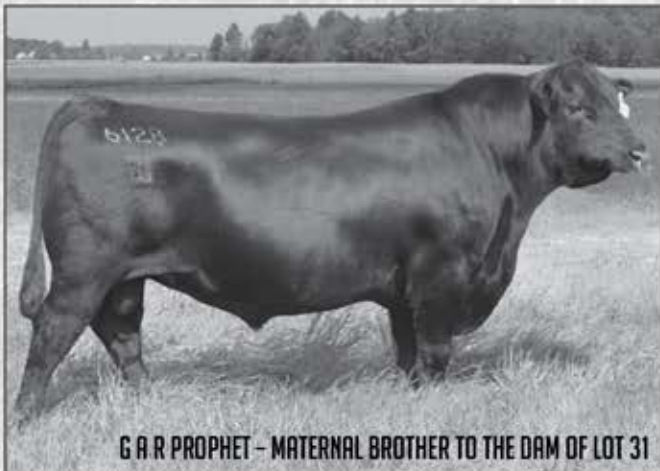
A A R Ten X 7008 S A
EXAR Resistol 3710B
 17434366 Sitz Henrietta Pride 643T

Connealy Mentor 7374
MPA New Lady 209
 17604302 Daltons New Lady 7212

Mytty In Focus
 A A R Lady Kelton 5551
 Connealy Onward
 Sitz Henrietta Pride 81M
 G A R Retail Product
 Executa of Conanga 939
 S S Objective T510 0T26
 Daltons New Lady 5294

CED	BW	WW	YW	SC	MILK	CW	MARB	REA	SW	SB
+8	+2.4	+75	+136	+2.67	+32	+71	+0.50	+0.81	+77.78	+176.09
Act. BW			Adj. WW			Adj. YW				
78			942			1404				

- This high growth, high scrotal, high maternal bull is in the Top 2% for \$Beef with +8 CED qualifying for Show Me Select.
- He had an individual birth ratio of 95, weaning ratio of 114, yearling ratio of 112, UREA of 106 and stems from a dam that records WR 3 @ 114, YR 3 @ 107, %IMF 3 @ 114, UREA 3 @ 107.



31

BLACK GOLD STUD 711

DOB: 01/16/17 REG#: 18919066 TATTOO: 711

A A R Ten X 7008 S A
EXAR Stud 4658B
 17908266 BoBo Rita 1559

G A R Predestined
G A R Predestined N1039
 16612080 G A R Objective 1885

Mytty In Focus
 A A R Lady Kelton 5551
 Summitcrest Complete 1P55
 DRMCRA 111 Rita 6108
 B/R New Design 036
 G A R Ext 4206
 S S Objective T510 0T26
 G A R 1407 New Design 2232

CED	BW	WW	YW	SC	MILK	CW	MARB	REA	SW	SB
+11	+0.9	+51	+90	+0.18	+18	+32	+1.22	+0.44	+44.84	+136.31
Act. BW			Adj. WW			Adj. YW				
82			794							

- Heifer Bull.
- A high marbling individual by EXAR Stud from a dam who has a progeny production record of WR 2 @ 103, UREA 11 @ 102 with one daughter in production with an average nursing ratio of 117.

G A R PROPHET - MATERNAL BROTHER TO THE DAM OF LOT 31

32

VALLEY OAKS ALL IN 6037

DOB: 08/20/16 REG#: 1871072 TATTOO: 6037

Deer Valley All In
17307074

A A R Ten X 7008 S A
Deer Valley Rita 0274

TCF Rita 7090
15774379

Connealy Onward
Davis Rita 2206

Mytty In Focus
A A R Lady Kelton 5551
Sitz Upward 307R
G A R Objective 2345
Connealy Lead On
Altune of Conanga 6104
B/R New Design 323
KMK Rita J352

CED	BW	WW	YW	SC	MILK	CW	MARB	REA	SW	SB
+14	-1.2	+53	+98	-0.07	+26	+15	+0.81	+0.61	+62.29	+81.88
Act. BW			Adj. WW			Adj. YW				
83			786			1160				

- Heifer Bull.
- This bull is a maternal brother to the featured Lot 1 bull in this year's event and is one of the top calving-ease sires.
- He stems from a dam that records %IMF 8@102, UREA 8@104.



33

BLACK GOLD ALL IN K336

DOB: 09/01/16 REG#: 18848797 TATTOO: K336

Deer Valley All In
17307074

A A R Ten X 7008 S A
Deer Valley Rita 0274

Black Gold MS Pride 306
17766918

G A R Prophet
MPA MS Pride 121

Mytty In Focus
A A R Lady Kelton 5551
Sitz Upward 307R
G A R Objective 2345
C R A Bextor 872 5205 608
G A R Objective 1885
Daltons Prolege 831
MPA MS Pride 115 314

CED	BW	WW	YW	SC	MILK	CW	MARB	REA	SW	SB
+8	+1.5	+81	+135	+0.19	+18	+54	+0.50	+0.71	+73.81	+149.90
Act. BW			Adj. WW			Adj. YW				
82			951			1346				

- Heifer Bull.
- He had an individual weaning ratio of 115, yearling ratio of 107, UREA of 102 and stems from a dam that records WR 2@110, YR 1@107, UREA 1@102.



KMK RITA J352
THIRD-GENERATION DAM OF LOT 32



2 BAR 28 AMBUSH 1735 - STEMS FROM THE
SAME FAMILY AS LOT 34

34

BLACK GOLD PAYWEIGHT 7054

DOB: 02/04/17 REG#: 18826736 TATTOO: 7054

Basin Payweight 1682
17038724

Basin Payweight 006S
21AR O Lass 7017

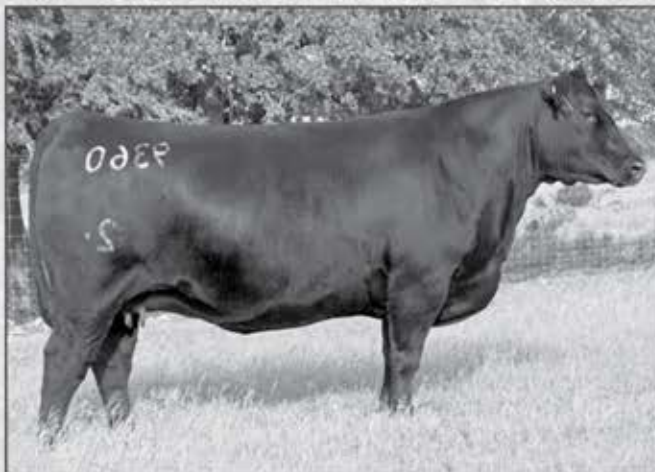
Crazy K Fanny 4805
18010742

A A R Ten X 7008 S A
SJH 9M25 9360 101

Vermilion Payweight J847
Basin Lucy 3829
HARB Pendleton 765 J H
21AR O Lass F24A
Mytty In Focus
A A R Lady Kelton 5551
Rito 9M25 of Rita 5F56 Pred
2 Bar Mile High 9360

CED	BW	WW	YW	SC	MILK	CW	MARB	REA	SW	SB
+8	-1.1	+67	+120	+0.98	+24	+53	+0.91	+0.39	+65.90	+151.96
Act. BW			Adj. WW			Adj. YW				
64			717							

- Heifer Bull.
- A heifer bull that reads with tremendous growth genetics without sacrificing carcass EPDs. He ranks in the Top 10% for both \$W and \$B and had an individual birth ratio of 86, weaning ratio of 101 and stems from an extremely productive Ten X daughter.



2 BAR MILE HIGH 9360 - THIRD-GENERATION DAM OF LOT 34

ANGUS BULLS



LOT 35



LOT 36

35 VALLEY OAKS FORTITUDE 6033

DOB: 08/16/16 REG#: 18643980 TATTOO: 6033

PA Fortitude 2500
17418539

GAR-EGL Protege
G G Clara 0171

BoBo Barbara Perfection 3591
17611427

EXAR Upshot 0562B
Buf Barbara Perfection 0561

Rito 112 of 2536 Rito 616
L B 6807 Isabel 339
SydGen C C & 7
G G Clara 7192
Sitz Upward 307R
EXAR Barbara T020
Exar Emblazon 8268
BUF Barbara Perfection 7361

CED	BW	WW	YW	SC	MILK	CW	MARB	REA	SW	SB
+8	+1.3	+65	+117	+1.45	+24	+59	+0.51	+0.82	+60.78	+169.93
Act. BW			Adj. WW			Adj. YW				
63			690			1309				

- This featured Show Me Select qualified bull reads with tremendous \$Beef genetics.
- He stems from a dam that records WR 1 @ 114, YR 1 @ 108, %IMF 2 @ 111, UREA 2 @ 110.

36 VALLEY OAKS FORTITUDE 6050

DOB: 09/07/16 REG#: 18643952 TATTOO: 6050

PA Fortitude 2500
17418539

GAR-EGL Protege
G G Clara 0171

VOA Blackcap 4037
18031009

Fox Run War Time 9359
G A R Objective 3029

Rito 112 of 2536 Rito 616
L B 6807 Isabel 339
SydGen C C & 7
G G Clara 7192
Werner War Dance FRF
TCF Blackcap 7156
S S Objective T510 0T26
G A R Predestined N425

CED	BW	WW	YW	SC	MILK	CW	MARB	REA	SW	SB
+8	+0.6	+54	+91	+0.80	+23	+39	+0.86	+0.49	+54.39	+141.20
Act. BW			Adj. WW			Adj. YW				
70			708			1170				

- Heifer Bull.
- He had an individual birth ratio of 94, weaning ratio of 108, yearling ratio of 103, %IMF of 108, UREA of 101 and stems from a dam that has been extremely productive back to the featured Blackcap family.

37 VALLEY OAKS FORTITUDE 6055

DOB: 09/10/16 REG#: 18643954 TATTOO: 6055

PA Fortitude 2500
17418539

GAR-EGL Protege
G G Clara 0171

VOA Rita 4032
18037676

Connealy Consensus 7229
Deer Valley Rita 9607

Rito 112 of 2536 Rito 616
L B 6807 Isabel 339
SydGen C C & 7
G G Clara 7192
Connealy Consensus
Blue Lilly of Conanga 16
S A V Final Answer 0035
G A R Ext 614

CED	BW	WW	YW	SC	MILK	CW	MARB	REA	SW	SB
+15	-1.4	+56	+101	+0.70	+24	+44	+0.85	+0.66	+62.62	+145.82
Act. BW			Adj. WW			Adj. YW				
70			685			1216				

- One of the top calving-ease bulls of this year's event without sacrificing marbling and carcass genetics.
- He had an individual birth ratio of 98, weaning ratio of 101, yearling ratio of 101, UREA of 110 and stems from a dam that records BR 2 @ 99, WR 1 @ 101, YR 1 @ 103, UREA 1 @ 110.



38

BLACK GOLD RAMPAGE K6025

DOB: 12/12/16 REG#: 18890002 TATTOO: K6025

MCC Daybreak
Quaker Hill Ramage 0A36
 16925771

Boyd New Day 8005
 MCC Miss Focus 134
 Ideal 4355 of 0T26 2440
 QHF Blackcap 6E2 of 4V16 4355
 QHF Blackcap 4V16 of 1H8

Connealy Consensus 7229
Crazy K Lucy V105
 17116854

Connealy Consensus
 Blue Lilly of Conanga 16
 C A Future Direction 5321
 Basin Lucy 178E

CED	BW	WW	YW	SC	MILK	CW	MARB	REA	SW	SB
+8	+2.0	+79	+138	+0.31	+24	+67	+1.00	+1.17	+77.27	+199.26
Act. BW					Adj. WW		Adj. YW			
79					717					

- Off the chart carcass EPDs reading with +1 on marbling and +1 on ribeye as well as the highest \$Beef bull of the entire offering.
- He stems from a dam that records WR 2@109, %IMF 7@104, UREA 7@101 with three daughters in production with an average nursing ratio of 104.



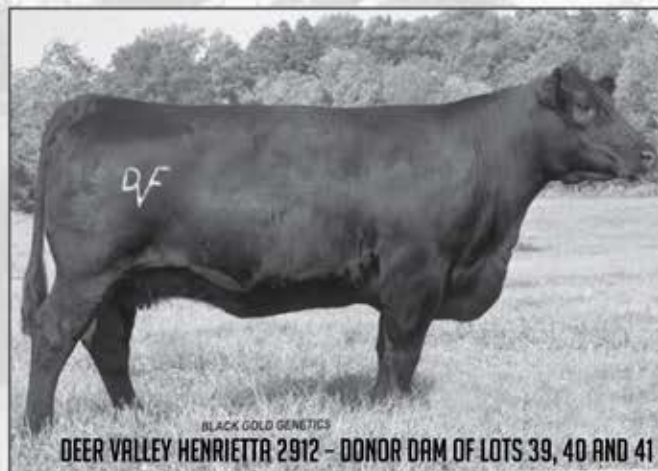
CRAZY K LUCY V105 - DAM OF LOT 38

39

BLACK GOLD RAMPAGE 683

DOB: 11/12/16 REG#: 18869111 TATTOO: 683

CED	BW	WW	YW	SC	MILK	CW	MARB	REA	SW	SB
+5	+3.9	+82	+136	+1.35	+25	+61	+0.89	+1.16	+74.16	+177.45
Act. BW					Adj. WW		Adj. YW			
67					706		1173			

BLACK GOLD GENETICS
DEER VALLEY HENRIETTA 2912 - DONOR DAM OF LOTS 39, 40 AND 41

40

BLACK GOLD RAMPAGE K6020

DOB: 12/03/16 REG#: 18890000 TATTOO: K6020

CED	BW	WW	YW	SC	MILK	CW	MARB	REA	SW	SB
+8	+2.6	+70	+122	+1.46	+25	+51	+0.50	+1.14	+67.75	+152.73
Act. BW					Adj. WW		Adj. YW			
78					717					

41

BLACK GOLD RAMPAGE K6023

DOB: 12/09/16 REG#: 18890001 TATTOO: K6023

MCC Daybreak
Quaker Hill Ramage 0A36
 16925771

Boyd New Day 8005
 MCC Miss Focus 134
 Ideal 4355 of 0T26 2440
 QHF Blackcap 6E2 of 4V16 4355
 QHF Blackcap 4V16 of 1H8

Summitcrest Complete 1P55
Deer Valley Henrietta 2912
 17505788

C F Right Design 1802
 Summitcrest Elba 1M17
 Connealy Onward
 Sitz Henrietta Pride 81M

CED	BW	WW	YW	SC	MILK	CW	MARB	REA	SW	SB
+9	+1.9	+70	+120	+1.47	+30	+57	+0.39	+0.99	+73.25	+156.76
Act. BW					Adj. WW		Adj. YW			
77					630					

- These flush brothers stem from a dam that records WR 1@102 with one daughter in production with an average nursing ratio of 101.
- Grandam is a full sister to the GENEX Beef AI sire, Sitz Upward 307R, and is one of the top income-producing cows in the Deer Valley and Express Ranches programs.

42

BLACK GOLD RAMPAGE K296

DOB: 08/23/16 REG#: 18860662 TATTOO: K296

MCC Daybreak
Quaker Hill Ramage 0A36
 16925771

Boyd New Day 8005
 MCC Miss Focus 134
 Ideal 4355 of 0T26 2440
 QHF Blackcap 6E2 of 4V16 4355
 QHF Blackcap 4V16 of 1H8

Connealy Final Product
Riverbend Lucy Z007
 17255152

Connealy Product 568
 Ebonista of Conanga 471
 C R A Bextor 872 5205 608
 Basin Lucy 3829

CED	BW	WW	YW	SC	MILK	CW	MARB	REA	SW	SB
+7	+1.1	+73	+121	+0.80	+21	+47	+0.63	+0.90	+70.74	+142.14
Act. BW					Adj. WW		Adj. YW			
83					945		1327			

- Heifer Bull.
- He had an individual weaning ratio of 115, yearling ratio of 106, UREA of 104 and stems from a dam that records YR 2@104.

43

BLACK GOLD RAMPAGE K746

DOB: 10/06/16 REG#: 18860664 TATTOO: K746

MCC Daybreak
Quaker Hill Ramage 0A36
 16925771

Boyd New Day 8005
 MCC Miss Focus 134
 Ideal 4355 of 0T26 2440
 QHF Blackcap 6E2 of 4V16 4355
 QHF Blackcap 4V16 of 1H8

S A V Iron Mountain 8066
Daltons Isabel 1222
 17148079

TC Gridiron 258
 S A V Madame Pride 3249
 Bon View New Design 1407
 L B 6807 Isabel 339

CED	BW	WW	YW	SC	MILK	CW	MARB	REA	SW	SB
+9	+0.8	+68	+118	+0.65	+26	+52	+0.50	+1.01	+65.76	+157.25
Act. BW					Adj. WW		Adj. YW			
73					706		1125			

- Heifer Bull.
- He had an individual birth ratio of 88 and stems from a dam that records BR 1@88 back to a Pathfinder grandam on the bottom side.

44

BLACK GOLD RAMPAGE K6008

DOB: 11/11/16 REG#: 18714554 TATTOO: K6008

MCC Daybreak
Quaker Hill Ramage 0A36
 16925771

Boyd New Day 8005
 MCC Miss Focus 134
 Ideal 4355 of 0T26 2440
 QHF Blackcap 6E2 of 4V16 4355
 QHF Blackcap 4V16 of 1H8

Deer Valley All In
Black Gold Rita 4107
 18026811

A A R Ten X 7008 S A
 Deer Valley Rita 0274
 G A R Predestined
 Chair Rock Objective 7067

CED	BW	WW	YW	SC	MILK	CW	MARB	REA	SW	SB
+8	+2.8	+72	+114	+0.66	+25	+50	+0.71	+1.11	+70.62	+159.20
Act. BW					Adj. WW		Adj. YW			
79					731		1107			

- A high ribeye bull that ranks in the Top 5% for \$W and Top 10% for \$Beef.

45

VALLEY OAKS RAMPAGE 7036

DOB: 02/07/17 REG#: 18776196 TATTOO: 7036

MCC Daybreak
Quaker Hill Rampage 0A36
 16925771

QHF Blackcap 6E2 of 4V16 4355

Boyd New Day 8005
 MCC Miss Focus 134

Ideal 4355 of 0T26 2440
 QHF Blackcap 4V16 of 1H8

Connealy Confidence 0100
Deer Valley Rita 3216
 17577941

G A R 5050 New Design 1419

Connealy Tobin
 Becka Gala of Conanga 8281

G A R New Design 5050
 G A R Objective 1067

CED	BW	WW	YW	SC	MILK	CW	MARB	REA	\$W	\$B
+14	-1.3	+55	+112	-0.31	+21	+43	+0.16	+1.42	+66.60	+138.77
Act. BW			Adj. WW			Adj. YW				
71			662							

• Heifer Bull.

• This heifer bull has tremendous spread from birth to yearling without sacrificing ribeye area and stems from a dam that records BR 2@92.

47

BGG TOUR OF DUTY 654

DOB: 09/02/16 REG#: 18870782 TATTOO: 654

CED	BW	WW	YW	SC	MILK	CW	MARB	REA	\$W	\$B
+8	+2.0	+57	+112	+0.92	+33	+56	+0.30	+1.03	+59.82	+137.81
Act. BW			Adj. WW			Adj. YW				
70			806			1352				

48

BGG TOUR OF DUTY 661

DOB: 09/07/16 REG#: 18870783 TATTOO: 661

Werner War Party 2417
R B Tour Of Duty 177
 16984170

B A Lady 6807 305

S A V Pioneer 7301
Deer Valley Rita 9035
 16577355

E F Rita 0221

Connealy Onward
 BAAR USA Lady Jaye 489

Vermilion Dateline 7078
 G D Lady Hi Flyer 302

S A V Final Answer 0035
 S A V Blackbird 5297

B/R New Design 036
 G A R Precision 2168

CED	BW	WW	YW	SC	MILK	CW	MARB	REA	\$W	\$B
-1	+3.2	+70	+118	-0.54	+24	+49	+0.52	+0.53	+64.58	+130.92
Act. BW			Adj. WW			Adj. YW				
67			760			1266				

• Flush brothers that stem from a dam that records WR 3@116, YR 2@113 with seven daughters in production with an average nursing ratio of 102.

50

BGG TOUR OF DUTY K656

DOB: 09/22/16 REG#: 18848799 TATTOO: K656

Werner War Party 2417
R B Tour Of Duty 177
 16984170

B A Lady 6807 305

Connealy Confidence 0100
SSA Lady Jaye Confidence A67
 17756933

Springfield Lady Jaye 0027

Connealy Onward
 BAAR USA Lady Jaye 489

Vermilion Dateline 7078
 G D Lady Hi Flyer 302

Connealy Tobin
 Becka Gala of Conanga 8281

G A R Ultimate
 Destiny Lady Jaye 8005

CED	BW	WW	YW	SC	MILK	CW	MARB	REA	\$W	\$B
+12	-0.2	+57	+104	-0.75	+26	+41	+0.15	+0.77	+61.41	+109.80
Act. BW			Adj. WW			Adj. YW				
78			832			1282				

• Heifer Bull.

• He had an individual birth ratio of 98, weaning ratio of 101, yearling ratio of 102 and stems from a dam that records BR 1@98, WR 1@101, YR 1@102.

46

VALLEY OAKS TOUR 6026

DOB: 08/01/16 REG#: 18646586 TATTOO: 6026

Werner War Party 2417
R B Tour Of Duty 177
 16984170

B A Lady 6807 305

Connealy Confidence 0100
Black Gold Miss Eva 1314
 18090509

Ayres Brilliant Eva 852

Connealy Onward
 BAAR USA Lady Jaye 489

Vermilion Dateline 7078
 G D Lady Hi Flyer 302

Connealy Tobin
 Becka Gala of Conanga 8281

S A V Brilliance 8077
 Ayres Eva Longoria 10

CED	BW	WW	YW	SC	MILK	CW	MARB	REA	\$W	\$B
+7	+1.5	+53	+87	+0.18	+32	+24	+0.40	+0.70	+64.48	+92.64
Act. BW			Adj. WW			Adj. YW				
77			672			1157				

• This Show Me Select qualified bull is a high maternal individual that had an individual weaning ratio of 103, yearling ratio of 102 and stems from a dam that records WR 1@103, YR 1@102.

49

BGG TOUR OF DUTY K426

DOB: 09/09/16 REG#: 18851965 TATTOO: K426

Werner War Party 2417
R B Tour Of Duty 177
 16984170

B A Lady 6807 305

Sitz Upward 307R
EXAR Lucy 0905
 16672451

Basin Lucy 3829

Connealy Onward
 BAAR USA Lady Jaye 489

Vermilion Dateline 7078
 G D Lady Hi Flyer 302

Connealy Onward
 Sitz Henrietta Pride 81M

C A Future Direction 5321
 Basin Lucy 178E

CED	BW	WW	YW	SC	MILK	CW	MARB	REA	\$W	\$B
+10	+1.7	+61	+110	+0.48	+32	+54	+0.41	+0.76	+64.59	+135.99
Act. BW			Adj. WW			Adj. YW				
78			777			1297				

• Heifer Bull.

• He stems from a dam that records BR 2@95 with four daughters in production with an average nursing ratio of 109.



51

BGG TOUR OF DUTY 677

DOB: 10/07/16 REG#: 18857598 TATTOO: 677

CED	BW	WW	YW	SC	MILK	CW	MARB	REA	SW	SB
+11	+0.5	+57	+92	+0.43	+35	+33	+0.72	+0.37	+66.70	+96.84
Act. BW			Adj YW			Adj YW				
73			739			1173				



RITA 2811 OF 2536 BVND 878 - GRANDAM OF LOTS 51 AND 52

52

BGG TOUR OF DUTY K776

DOB: 10/07/16 REG#: 18857599 TATTOO: K776

R B Tour Of Duty 177
16984170

Werner War Party 2417
B A Lady 6807 305

BoBo Blackcap 2035
17245925

S A V Pioneer 7301
Rita 2811 of 2536 BVND 878

Connealy Onward
BAAR USA Lady Jaye 489
Vermilion Dateline 7078
G D Lady Hi Flyer 302
S A V Final Answer 0035
S A V Blackbird 5297
Bon View New Design 878
G A R Precision 2536

CED	BW	WW	YW	SC	MILK	CW	MARB	REA	SW	SB
+7	+2.1	+61	+94	+0.77	+30	+34	+0.37	+0.32	+72.11	+90.24
Act. BW			Adj YW			Adj YW				
81			662			1126				

• These flush brothers stem from a dam that records WR 2@108, YR 2@106.

53

BGG TOUR OF DUTY K702

DOB: 01/20/17 REG#: 18922266 TATTOO: K702

R B Tour Of Duty 177
16984170

Werner War Party 2417
B A Lady 6807 305

Black Gold Rita 350
17866364

EXAR Upshot 0562B
G A R Retail Product H536

Connealy Onward
BAAR USA Lady Jaye 489
Vermilion Dateline 7078
G D Lady Hi Flyer 302
Sitz Upward 307R
EXAR Barbara T020
G A R Retail Product
G A R 1407 New Design 1942

CED	BW	WW	YW	SC	MILK	CW	MARB	REA	SW	SB
+9	+1.3	+50	+90	+0.26	+28	+33	+0.63	+0.50	+53.44	+102.98
Act. BW			Adj YW			Adj YW				
80			707							

• The combination of RB Tour of Duty 177 and the featured GAR Precision 810 blend for powerful genetics.



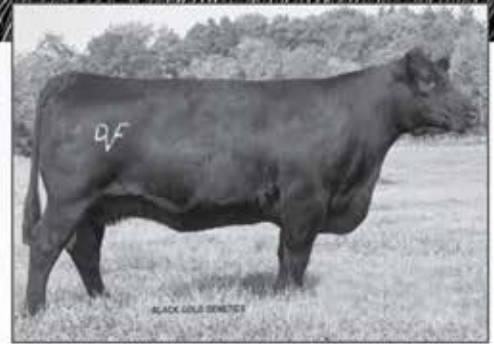
GAR PRECISION 810 - FOURTH-GENERATION DAM OF LOT 53

ANGUS BULLS





LOT 55



DEER VALLEY HENRIETTA 2912 - DAM OF LOTS 54 AND 55



BOBO RITA 9035 - DAM OF LOTS 56 AND 57

54

BLACK GOLD JOURNEY 655

DOB: 09/02/16 REG#: 18851969 TATTOO: 655

CED	BW	WW	YW	SC	MILK	CW	MARB	REA	SW	SB
+5	+1.8	+64	+115	+1.29	+36	+47	+0.59	+1.13	+75.21	+159.73
Act. BW			Adj WW			Adj YW				
67			799			1295				

55

BLACK GOLD JOURNEY 657

DOB: 09/03/16 REG#: 18851970 TATTOO: 657

CED	BW	WW	YW	SC	MILK	CW	MARB	REA	SW	SB
+14	-0.2	+62	+114	+0.87	+33	+48	+0.71	+0.87	+74.15	+156.04
Act. BW			Adj WW			Adj YW				
65			768			1285				

- These featured flush brothers by WR Journey-1X74 stems back to the full sister to the GENEX Beef AI sire, Sitz Upward 907R, and the high income producing Sitz Henrietta Pride 643T.
- They stem from a dam that records WR 1@102 with one daughter in production with an average nursing ratio of 101.



G A R OBJECTIVE 2345 - THIRD-GENERATION DAM OF LOT 58

56

BLACK GOLD JOURNEY K356

DOB: 09/04/16 REG#: 18851963 TATTOO: K356

CED	BW	WW	YW	SC	MILK	CW	MARB	REA	SW	SB
+9	+0.4	+41	+72	+0.04	+33	+22	+0.65	+0.60	+49.28	+105.78
Act. BW			Adj WW			Adj YW				
83			765			1191				

57

BLACK GOLD JOURNEY K386

DOB: 09/06/16 REG#: 18852410 TATTOO: K386

CED	BW	WW	YW	SC	MILK	CW	MARB	REA	SW	SB
+8	+2.8	+55	+90	-0.48	+26	+51	+0.83	+0.94	+52.94	+173.36
Act. BW			Adj WW			Adj YW				
84			766			1257				

- These bulls stem from a dam that has four daughters in production with an average nursing ratio of 101.

58

BLACK GOLD JOURNEY 706

DOB: 01/11/17 REG#: 18922227 TATTOO: 706

CED	BW	WW	YW	SC	MILK	CW	MARB	REA	SW	SB
+5	+0.9	+65	+118	+1.53	+29	+59	+0.68	+0.78	+73.09	+174.05
Act. BW			Adj WW			Adj YW				
64			732							

- Heifer Bull.
- He blends WR Journey-1X74, Ten X and Upward into a powerful genetic package. This bull is three generations AI for calving ease.

59

BLACK GOLD JOURNEY 718

DOB: 02/02/17 REG#: 18922245 TATTOO: 718

CED	BW	WW	YW	SC	MILK	CW	MARB	REA	\$W	\$B
+8	+1.6	+59	+95	-0.62	+31	+38	+1.07	+0.77	+66.96	+151.16
Act. BW			Adj. WW			Adj. YW				
75			804							

60

BLACK GOLD JOURNEY 719

DOB: 02/02/17 REG#: 18922246 TATTOO: 719

CED	BW	WW	YW	SC	MILK	CW	MARB	REA	\$W	\$B
+4	+3.6	+64	+107	-0.59	+22	+42	+1.13	+0.83	+54.39	+164.15
Act. BW			Adj. WW			Adj. YW				
82			806							

61

BLACK GOLD JOURNEY 721

DOB: 02/03/17 REG#: 18922247 TATTOO: 721

CED	BW	WW	YW	SC	MILK	CW	MARB	REA	\$W	\$B
+7	+1.3	+51	+84	-0.47	+21	+30	+1.05	+0.87	+50.28	+132.71
Act. BW			Adj. WW			Adj. YW				
87			720							

62

BLACK GOLD JOURNEY 723

DOB: 02/08/17 REG#: 18955575 TATTOO: 723

CED	BW	WW	YW	SC	MILK	CW	MARB	REA	\$W	\$B
+8	+0.3	+41	+66	+0.93	+23	+13	+0.91	+0.38	+44.05	+83.99
Act. BW			Adj. WW			Adj. YW				
90			745							

• Dam is a maternal sister to GAR Prophet, Select Sires AI sire, and she had a progeny production record of WR 2@103, UREA 11@102 with one daughter in production with an average nursing ratio of 117.

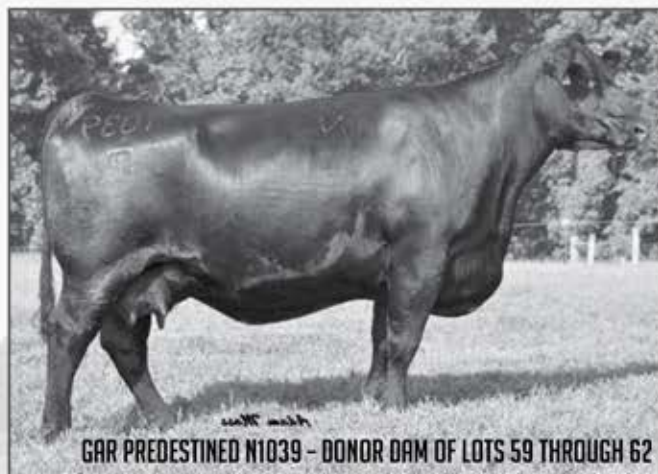
63

VALLEY OAKS TOP GAME 6073

DOB: 10/17/16 REG#: 18643965 TATTOO: 6073

CED	BW	WW	YW	SC	MILK	CW	MARB	REA	\$W	\$B
+12	+0.4	+63	+106	-0.49	+28	+51	+1.09	+0.85	+70.69	+165.99
Act. BW			Adj. WW			Adj. YW				
71			734			1168				

• Heifer Bull.
• A heifer bull that reads with +1 marbling and in the Top 4% for \$Beef. He had an individual birth ratio of 90, weaning ratio of 108, yearling ratio of 101, %IMF of 113 and stems from a dam that records WR 2@107, YR 2@101, %IMF 1@113.



GAR PREDESTINED N1039 - DONOR DAM OF LOTS 59 THROUGH 62



GAR OBJECTIVE 1885 - GRANDAM OF LOTS 59 THROUGH 62

64

VALLEY OAKS TOP GAME 6079

DOB: 10/24/16 REG#: 18643967 TATTOO: 6079

CED	BW	WW	YW	SC	MILK	CW	MARB	REA	\$W	\$B
+9	+0.5	+46	+78	+1.75	+23	+28	+0.75	+0.66	+45.41	+117.21
Act. BW			Adj. WW			Adj. YW				
77			658			1069				

• Heifer Bull.
• He stems from a dam that records BR 3@98, WR 2@105.

65

VALLEY OAKS TOP GAME 6084

DOB: 11/01/16 REG#: 18645966 TATTOO: 6084

Sitz Top Game 561X
Connealy Top Game 1338
 17889513
 Black Coral of Conanga 1338

GDAR Game Day 449
 Sitz Pride 88T
 Connealy Trustmark
 Black Core of Conanga 53
 SydGen Straight Up 8998
 Brockmere ELLUNA 8063

Brockmere Straight Up 1082
VO Elluna 3024 GW
 17666936
 VO Game On 111

G A R Game On
 G A R 5050 New Design 479

CED	BW	WW	YW	SC	MILK	CW	MARB	REA	SW	SB
+14	-1.0	+34	+65	-0.18	+35	+34	+0.69	+0.81	+50.67	+122.84
Act. BW			Adj. WW				Adj. YW			
70			654				1132			

- Heifer Bull.
- This bull had an individual birth ratio of 91, UREA of 103 and stems from a dam that records BR 2@97, UREA 1@103.

67

VALLEY OAKS TOP GAME 6091

DOB: 11/15/16 REG#: 18643975 TATTOO: 6091

Sitz Top Game 561X
Connealy Top Game 1338
 17889513
 Black Coral of Conanga 1338

GDAR Game Day 449
 Sitz Pride 88T
 Connealy Trustmark
 Black Core of Conanga 53
 Sitz Upward 307R
 EXAR Barbara T020

EXAR Upshot 0562B
Crazy K Rita 4050
 17760112
 BoBo Rita 1597

Thomas Grade Up 6849
 Raybar Rita 807

CED	BW	WW	YW	SC	MILK	CW	MARB	REA	SW	SB
+1	+3.1	+38	+68	+1.16	+25	+27	+1.07	+0.33	+31.54	+97.34
Act. BW			Adj. WW				Adj. YW			
83			588				1058			

- High marbling bull that had an %IMF ratio of 119, UREA of 101 and stems from a dam that records %IMF 1@119, UREA 1@101.

69

VALLEY OAKS TOP GAME 7009

DOB: 03/19/17 REG#: 18775519 TATTOO: 7009

Sitz Top Game 561X
Connealy Top Game 1338
 17889513
 Black Coral of Conanga 1338

GDAR Game Day 449
 Sitz Pride 88T
 Connealy Trustmark
 Black Core of Conanga 53
 Connealy Tobin
 Becka Gala of Conanga 8281

Connealy Confidence 0100
Deer Valley Rita 3216
 17577941
 G A R 5050 New Design 1419

G A R New Design 5050
 G A R Objective 1067

CED	BW	WW	YW	SC	MILK	CW	MARB	REA	SW	SB
+12	-0.5	+34	+65	+0.25	+25	+12	+0.62	+0.79	+34.09	+86.00
Act. BW			Adj. WW				Adj. YW			
72			639							

- Heifer Bull.
- He blends Sitz Top Game and Connealy Confidence along with the Rita family into a powerful genetic package.



66

VALLEY OAKS TOP GAME 6089

DOB: 11/07/16 REG#: 18643973 TATTOO: 6089

Sitz Top Game 561X
Connealy Top Game 1338
 17889513
 Black Coral of Conanga 1338

GDAR Game Day 449
 Sitz Pride 88T
 Connealy Trustmark
 Black Core of Conanga 53
 Connealy Danny Boy
 Doris of Conanga 669

Connealy Contrast
VO Miss Rita 172
 17328319
 G A R Objective N1980

S S Objective T510 0T26
 G A R Predestined N005

CED	BW	WW	YW	SC	MILK	CW	MARB	REA	SW	SB
+9	+0.2	+44	+79	+0.49	+29	+34	+1.24	+0.54	+55.57	+124.26
Act. BW			Adj. WW				Adj. YW			
80			643				1086			

- This bull had an individual %IMF ratio of 154 and is a high marbling bull that is a sure shot heifer bull.

68

VALLEY OAKS TOP GAME 6093

DOB: 11/17/16 REG#: 18643977 TATTOO: 6093

Sitz Top Game 561X
Connealy Top Game 1338
 17889513
 Black Coral of Conanga 1338

GDAR Game Day 449
 Sitz Pride 88T
 Connealy Trustmark
 Black Core of Conanga 53
 Werner War Dance FRF
 TCF Blackcap 7156

Fox Run War Time 9359
VO Miss Rita 3026
 17680921
 G A R 5050 New Design N559

G A R New Design 5050
 G A R Objective 1245

CED	BW	WW	YW	SC	MILK	CW	MARB	REA	SW	SB
+10	+1.9	+53	+88	-0.69	+30	+45	+0.83	+0.82	+60.75	+144.63
Act. BW			Adj. WW				Adj. YW			
77			662				1128			

- Heifer Bull.
- A heifer bull with high maternal genetics without sacrificing carcass.

70

BLACK GOLD 9Q20 652

DOB: 08/31/16 REG#: 18848803 TATTOO: 652

Gardens Highmark
Rito 9Q20 of Rita 5F56 GHM
 16408445
 Rita 5F56 of 1/98 FD

Summitcrest Scotch Cap 0B45
 Green Garden Pride 6128 S1
 C A Future Direction 5321
 Rita 1198 of 2536 Rito 636

Werner War Party 2417
44 Blackcap Empress 519X
 16907049
 B/R Blackcap Empress 127

Connealy Onward
 BAAR USA Lady Jaye 489
 B/R Destination 727
 B/R Blackcap Empress 8183

CED	BW	WW	YW	SC	MILK	CW	MARB	REA	SW	SB
+0	+2.4	+57	+100	+0.20	+33	+47	+0.83	+0.57	+62.76	+138.70
Act. BW			Adj. WW				Adj. YW			
70			817				1276			

- He stems from a dam that records BR 2@99, WR 1@101, YR 1@101 with three daughters in production with an average nursing ratio of 107.



71

BLACK GOLD UPSHOT K708

DOB: 01/24/17 REG#: 18889995 TATTOO: K708

V A R Upshot 3014
17455089

EXAR Upshot 0562B
EXAR New Design 4212

Summitcrest Complete 1P55

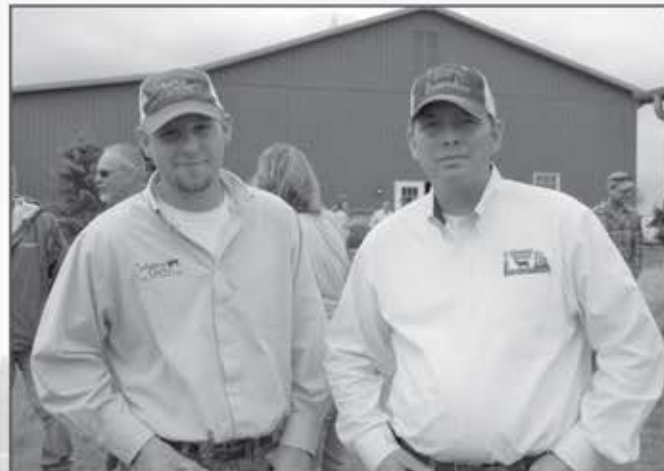
Black Gold Rita 1311
18023040

SMR Rita 7500

Sitz Upward 307R
EXAR Barbara T020
Rito 112 of 2536 Rito 616
G A R New Design 1200
C F Right Design 1802
Summitcrest Elba 1M17
Mytty In Focus
A Plus Rita 3106

CED	BW	WW	YW	SC	MILK	CW	MARB	REA	SW	SB
+1	+1.8	+62	+111	+0.65	+18	+41	+0.50	+0.31	+54.23	+130.52
Act. BW			Adj. WW			Adj. YW				
85			725							

• He had an individual weaning ratio of 102.



72

VALLEY OAKS CONFIDENCE 7000

DOB: 01/12/17 REG#: 18775505 TATTOO: 7000

GAR Confidence H 2729
17474712

Connealy Confidence 0100
2 Bar Mile High 9360

Black Gold Barbara 43002
17986190

PA Full Power 1208
Barbara LGW 9726

Connealy Tobin
Becka Gala of Conanga 8281
Riverbend Mile High 3718
2 Bar Objective 863
PA Power Tool 9108
Pine View SQR Rita W091
TC Total 410
Barbara L G W 4078

CED	BW	WW	YW	SC	MILK	CW	MARB	REA	SW	SB
+3	+1.0	+59	+100	+0.87	+17	+31	+0.69	+0.73	+50.46	+121.63
Act. BW			Adj. WW			Adj. YW				
71			701							

• Heifer Bull.

• This bull had an individual birth ratio of 94 and stems from a dam that records BR 1@94.



ANGUS BULLS

73

BLACK GOLD CONFIDENCE 679

DOB: 10/18/16 REG#: 19011196 TATTOO: 679

GAR Confidence H 2729
17474712

Connealy Confidence 0100
2 Bar Mile High 9360

Lassie LGW 9649
16661064

Dr J Analyst M250
Lassie LGW 7053

Connealy Tobin
Becka Gala of Conanga 8281
Riverbend Mile High 3718
2 Bar Objective 863
B C C Bushwacker 41-93
G A R Precision 706
Bon View New Design 208
Lassie LGW 5220

CED	BW	WW	YW	SC	MILK	CW	MARB	REA	SW	SB
+11	-2.9	+39	+79	+0.43	+23	+11	+0.69	+0.31	+38.38	+70.52
Act. BW			Adj. WW			Adj. YW				
67			646			1100				

• The combination of GAR Confidence H 2729 blends in a powerful genetic package.



74

VALLEY OAKS THUNDERBIRD 7023

DOB: 02/24/17 REG#: 18777079 TATTOO: 7023

S A V Thunderbird 9061
16396499

S A V Final Answer 0035
S A V Emblynette 7411

PV F Burgess 5028
18248723

C&C Priority 1428B EXAR
PV F Burgess 2179

Sitz Traveler 8180
S A V Emulous 8145
S A V Bismarck 5682
S A V Emblynette 4408
Dameron First Class
Exar Princess 7879
P V F New Horizon 001
P V F Burgess 013

CED	BW	WW	YW	SC	MILK	CW	MARB	REA	SW	SB
-2	+4.0	+65	+108	-0.01	+19	+49	+0.52	+0.49	+51.04	+158.19
Act. BW			Adj. WW			Adj. YW				
80			749							

• Had an individual weaning ratio of 106 and stems from a dam that records WR 1@106.

75

VALLEY OAKS BUTKUS 6041

DOB: 08/31/16 REG#: 18649163 TATTOO: 6041

SandPoint Butkus X797

16829413

S A V Final Answer 0035

G A R Grid Maker 4603

A A R Ten X 7008 S A

VOA Miss Ten X 4009

18038373

G A R Total N738

Sitz Traveler 8180

S A V Emulous 8145

G A R Grid Maker

G A R New Design 741

Mytty In Focus

A A R Lady Kelton 5551

TC Total 410

G A R Retail Product 4754

CED	BW	WW	YW	SC	MILK	CW	MARB	REA	SW	SB
+11	+1.5	+77	+138	+1.42	+23	+67	+0.69	+0.52	+73.81	+166.70
Act. BW			Adj. WW			Adj. YW				
77			746			1242				

• Heifer Bull.

• Ranks in the Top 3% of the breed for \$Beef and had an individual weaning ratio of 114, yearling ratio of 110, UREA of 107.

• He stems from a dam that records BR 2@98, WR 1@114, YR 1@110, UREA 1@107.

77

BLACK GOLD PATRIOT 6464

DOB: 09/05/16 REG#: 18890019 TATTOO: 6464

Deer Valley Patriot 3222

17577916

Connealy Capitalist 028

Deer Valley Rita 0274

PA Full Power 1208

Black Gold Mignonne 43001

17986194

Mignonne LGW 8095

S A V Final Answer 0035

Prides Pita of Conanga 8821

Sitz Upward 307R

G A R Objective 2345

PA Power Tool 9108

Pine View SQR Rita W091

G A R Retail Product

Mignonne L G W 4112

CED	BW	WW	YW	SC	MILK	CW	MARB	REA	SW	SB
+4	+2.0	+68	+120	+0.12	+25	+50	+0.80	+0.85	+67.65	+152.23
Act. BW			Adj. WW			Adj. YW				
			840			1322				

• He had an individual weaning ratio of 101, yearling ratio of 102, %IMF of 101, UREA of 107.

76

VALLEY OAKS BUTKUS 7021

DOB: 02/21/17 REG#: 18830341 TATTOO: 7021

SandPoint Butkus X797

16829413

S A V Final Answer 0035

G A R Grid Maker 4603

Brockmere Straight Up 1082

Valley Oaks Wendy 5025 BP

18146044

D Bar L Wendy 174 3152

Sitz Traveler 8180

S A V Emulous 8145

G A R Grid Maker

G A R New Design 741

SydGen Straight Up 8998

Brockmere ELLUNA 8053

MOGCK Sure Shot

Derner Wendy 779 174

CED	BW	WW	YW	SC	MILK	CW	MARB	REA	SW	SB
+9	+1.1	+60	+101	+1.22	+17	+44	+0.19	+0.84	+57.98	+128.25
Act. BW			Adj. WW			Adj. YW				
71			726							

• Heifer Bull.

• He had an individual birth ratio of 95, weaning ratio of 103.

78

BLACK GOLD PATRIOT K6

DOB: 09/05/16 REG#: 18890018 TATTOO: K6

Deer Valley Patriot 3222

17577916

Connealy Capitalist 028

Deer Valley Rita 0274

PA Full Power 1208

Black Gold Erica 43004

17986188

Imogene LGW 9667

S A V Final Answer 0035

Prides Pita of Conanga 8821

Sitz Upward 307R

G A R Objective 2345

PA Power Tool 9108

Pine View SQR Rita W091

Woodhill Foresight

Imogene LGW 5085

CED	BW	WW	YW	SC	MILK	CW	MARB	REA	SW	SB
+9	+3.1	+75	+127	+0.47	+18	+55	+0.66	+0.79	+61.57	+154.43
Act. BW			Adj. WW			Adj. YW				
			825			1279				

79

BGG BLACK GRANITE K576

DOB: 09/19/16 REG#: 18860663 TATTOO: K576

Connealy Black Granite

17028963

Connealy Consensus 7229

Blue Lilly of Conanga 16

S A V Bismarck 5682

Eura Cal of Conanga 568

Mytty In Focus

A A R Lady Kelton 5551

B/R New Day 454

MPA Forevermore 960

Black Gold Forever Lady 4115

18094096

A A R Ten X 7008 S A

MPA Forevermore 103

CED	BW	WW	YW	SC	MILK	CW	MARB	REA	SW	SB
+15	-0.6	+49	+85	+1.41	+20	+35	+0.80	+0.75	+42.85	+128.90
Act. BW			Adj. WW			Adj. YW				
78			812			1231				

• Stems from a dam that records %IMF 1@109, UREA 1@101.

80

VALLEY OAKS CONSENSUS 6051

DOB: 09/07/16 REG#: 18643953 TATTOO: 6052

Connealy Consensus 7229

16447771

Connealy Consensus

Blue Lilly of Conanga 16

R C C 1407 Spark 4773

RCC Royal Fortune 4773 7397

15901402

RCC Royal Fortune 745 X 6403

RCC Royal Queen Fortune 5438

KMK Alliance 6595 187

Blinda of Conanga 004

Woodhill Admiral 77K

Blue Cash of Conanga 6020

Bon View New Design 1407

R C C Jessica Spark 3112

Mc Bee WMR Super X 745

RCC Royal Queen Fortune 5438

CED	BW	WW	YW	SC	MILK	CW	MARB	REA	SW	SB
+9	+0.8	+55	+85	+2.10	+18	+35	+0.60	+0.45	+54.55	+117.09
Act. BW			Adj. WW			Adj. YW				
65			658			1148				

• Heifer Bull.

• Had an individual birth ratio of 81 and stems from a dam that records BR 7@97, WR 8@102.



G A R OBJECTIVE 2345 - HER INFLUENCE SELLS

81

BLACK GOLD INDEX K6004

DOB: 11/06/16 REG#: 18848802 TATTOO: K6004

V A R Index 3282
17513381

G A R Ingenuity
Sandpoint Blackbird 8809

Rita 3P6 of 9MH5 Prophet
17663979

G A R Prophet
Rita 9MH5 of Rita 5F56 Pred

G A R New Design 5050
G A R Objective 1067
Connealy Onward
Riverbend Blackbird 4301
C R A Bextor 872 5205 608
G A R Objective 1885
G A R Predestined
Rita 5F56 of 1198 FD

CED	BW	WW	YW	SC	MILK	CW	MARB	REA	SW	SB
+7	+3.2	+63	+103	-0.19	+22	+38	+0.92	+0.58	+53.44	+124.74
Act. BW			Adj YW			Adj YW				
85			740			1041				

* Stems from a dam that records %IMF 3@123. This bull had an actual %IMF ratio of 108.



82

BLACK GOLD INSIGHT K6027

DOB: 12/29/16 REG#: 18953832 TATTOO: K6027

PVF Insight 0129
16805884

S A V Brilliance 8077
P V F Missie 790

RRR Rita 281
17295152

EXAR Upshot 0562B
EF Rita 9242

S A V Bismarck 5682
S A V Blackcap May 5270
P V F New Horizon 001
P V F Miss Raptor 024
Sitz Upward 307R
EXAR Barbara T020
TC Total 410
G A R Retail Product 1712

CED	BW	WW	YW	SC	MILK	CW	MARB	REA	SW	SB
+8	+1.8	+62	+120	+0.66	+21	+60	-0.02	+1.27	+57.06	+142.55
Act. BW			Adj YW			Adj YW				
75			618							

* Stems from a dam that records UREA 3@106.

83

BLACK GOLD THUNDER K406

DOB: 09/08/16 REG#: 18851964 TATTOO: K406

Connealy Thunder
15148659

Baldrige Kaboom K243 KCF
Parka of Conanga 241

Bridgeview PleasantPride 141
18253472

Connealy Comrade 1385
Bridgeview PleasantPride1212

Jauer 353 Traveler 589 27
Pleasanta of Conanga 736
Bon View Bando 598
Partina of Conanga 6237
Connealy Consensus 7229
Happy Gee of Conanga 919
C R A Bextor 872 5205 608
Lemmon Pleasant Pride R90

CED	BW	WW	YW	SC	MILK	CW	MARB	REA	SW	SB
+9	+0.6	+43	+82	+0.01	+30	+30	+0.95	+0.61	+50.46	+105.05
Act. BW			Adj YW			Adj YW				
86			764			1204				

* Heifer Bull.
* He had a %IMF ratio of 104 and stems from a dam that records %IMF 1@104.

84

VALLEY OAKS NEW YEAR 6088

DOB: 11/05/16 REG#: 18643972 TATTOO: 6088

Brockmere New Year 1081
17062521

S A V New Year 5320
Brockmere Ideal 8124

G A R Objective N529
16613470

S S Objective T510 0T26
G A R Predestined N765

Boyd New Day 8005
S A V Madame Pride 1093
S A V Hemi 3133
Brockmere odeal 5104
S S Traveler 6807 T510
S S Miss Rita R011 7R8
G A R Predestined
G A R Precision 81

CED	BW	WW	YW	SC	MILK	CW	MARB	REA	SW	SB
+4	+3.0	+65	+119	+0.02	+21	+53	+0.64	+0.62	+49.04	+142.92
Act. BW			Adj YW			Adj YW				
89			718			1180				

* Had an individual weaning ratio of 106, yearling ratio of 102, %IMF 1@103 and stems from a dam that records BR 5@95, %IMF 2@113, UREA 2@107.



85

VALLEY OAKS NEW YEAR 6082

DOB: 10/29/16 REG#: 18643970 TATTOO: 6082

Brockmere New Year 1081
17062521

S A V New Year 5320
Brockmere Ideal 8124

G A R Objective 2569
16496834

S S Objective T510 0T26
G A R Predestined N425

Boyd New Day 8005
S A V Madame Pride 1093
S A V Hemi 3133
Brockmere odeal 5104
S S Traveler 6807 T510
S S Miss Rita R011 7R8
G A R Predestined
G A R Precision 81

CED	BW	WW	YW	SC	MILK	CW	MARB	REA	SW	SB
-6	+5.5	+79	+141	+0.46	+9	+56	+0.78	+0.82	+43.70	+177.57
Act. BW			Adj YW			Adj YW				
89			669			1255				

* Had an individual yearling ratio of 109, %IMF of 115, UREA of 111 and stems from a dam that records WR 3@108, YR 3@108, %IMF 1@115, UREA 1@111.

86

VALLEY OAKS NEW YEAR 6072

DOB: 10/17/16 REG#: 18643964 TATTOO: 6072

Brockmere New Year 1081
17062521

S A V New Year 5320
Brockmere Ideal 8124

Exar Blackcap Mary 81106
15965415

Basin Franchise P142
Baldrige Blackcap Mary 105K

Boyd New Day 8005
S A V Madame Pride 1093
S A V Hemi 3133
Brockmere odeal 5104
C A Future Direction 5321
Basin Chloe 812L
Jauer 353 Traveler 589 27
Baldrige Blackcap Mary 65D

CED	BW	WW	YW	SC	MILK	CW	MARB	REA	SW	SB
+2	+2.4	+57	+93	-0.18	+30	+45	+0.34	+0.66	+63.26	+135.53
Act. BW			Adj YW			Adj YW				
85			745			1166				

* Had an individual weaning ratio of 110, yearling ratio of 101 and stems from a dam that records WR 6@103, YR 6@101, UREA 2@102.

ANGUS BULLS

87

VALLEY OAKS NEW YEAR 6090

DOB: 11/07/16 REG#: 18643974 TATTOO: 6090

S A V New Year 5320
Brockmere New Year 1081
 17062521 Brockmere Ideal 8124

S S Objective T510 0T26
G A R Objective C109
 16644822 G A R Predestined N736

Boyd New Day 8005
 S A V Madame Pride 1093
 S A V Hemi 3133
 Brockmere odeal 5104
 S S Traveler 6807 T510
 S S Miss Rita R011 7R8
 G A R Predestined
 G A R Retail Product 1712

CED	BW	WW	YW	SC	MILK	CW	MARB	REA	SW	SB
-2	+4.8	+76	+129	+0.19	+20	+58	+0.51	+0.67	+57.76	+145.32
Act. BW			Adj. WW				Adj. YW			
89			651				1216			

• Had an individual yearling ratio of 105, UREA of 104 and stems from a dam that records WR 6 @ 105, YR 5 @ 103, UREA 1 @ 104 with two daughters in production with an average nursing ratio of 103.

88

VALLEY OAKS NEW YEAR 7033

DOB: 03/12/17 REG#: 18775517 TATTOO: 7033

S A V New Year 5320
Brockmere New Year 1081
 17062521 Brockmere Ideal 8124

S A V Final Answer 0035
WCC Erica 941
 16643281 RCC Emblem Erica Emily 6604

Boyd New Day 8005
 S A V Madame Pride 1093
 S A V Hemi 3133
 Brockmere odeal 5104
 Sitz Traveler 8180
 S A V Emulous 8145
 R&L F75 211
 R C C Emblem Erica A032 5299

CED	BW	WW	YW	SC	MILK	CW	MARB	REA	SW	SB
+0	+3.1	+49	+90	+1.05	+18	+35	+0.70	+0.63	+30.47	+123.03
Act. BW			Adj. WW				Adj. YW			
85			697							

• Had an individual birth ratio of 98 and stems from a dam with three daughters in production with an average nursing ratio of 107.

89

VALLEY OAK FINAL ANSWER 7027

DOB: 03/02/17 REG#: 18775515 TATTOO: 7027

S A V Final Answer 0035
Valley Oaks Final Answer 416
 18158568 OGL Burgess Bo 835-303

EXAR Denver 2002B
Valley Oaks Formera 5014
 18117458 Sandpoint Proud Formera 7760

Sitz Traveler 8180
 S A V Emulous 8145
 OGL Bodark 426-801
 O G L Burgess Rap 303-124
 EXAR Upshot 0562B
 Exar Royal Lass 1067
 Connealy Orward
 Pow of Conanga 677

CED	BW	WW	YW	SC	MILK	CW	MARB	REA	SW	SB
+9	+1.4	+45	+75	+2.04	+22	+13	+0.71	+0.16	+45.86	+72.14
Act. BW			Adj. WW				Adj. YW			
69			640							

• This bull had an individual birth ratio of 93 and stems from a dam that records BR 1 @ 93.

90

VALLEY OAK FINAL ANSWER 7037

DOB: 03/23/17 REG#: 18775520 TATTOO: 7037

S A V Final Answer 0035
Valley Oaks Final Answer 416
 18158568 OGL Burgess Bo 835-303

Jindra Double Vision
Valley Oaks Ms Vision 5003
 18116634 44 Ms Bextor 0094

Sitz Traveler 8180
 S A V Emulous 8145
 OGL Bodark 426-801
 O G L Burgess Rap 303-124
 Connealy Reflection
 Hoff Rachel 8312 405
 C R A Bextor 872 5205 608
 Shamrock Vale 5659 6017

CED	BW	WW	YW	SC	MILK	CW	MARB	REA	SW	SB
+1	+3.0	+54	+102	+1.69	+23	+33	+0.69	+0.51	+45.16	+123.38
Act. BW			Adj. WW				Adj. YW			
83			714							

• Had an individual weaning ratio of 101 and stems from a dam that records WR 1 @ 101.

Notes

Offering 75 Commercial Females in Groups of Five

All bred females have been AI'd to KCF BENNETT SOUTHSIDE, VIN-MAR JOHNNY CASH 3513 AND BGG/VALLEY OAKS PREMIUM to calve August 29, 2018. Exposed to Valley Oaks Ten Haul 5001, Valley Oaks Ranger 6006, Valley Oaks Ranger 6005 and Valley Oaks Ten x 6019 and if bull bred will calve between September 8 and October 21, 2018.

More up-to-date pregnancy checks/information will be available on sale day

91 5 COMMERCIAL FEMALES

92 5 COMMERCIAL FEMALES

93 5 COMMERCIAL FEMALES

94 5 COMMERCIAL FEMALES

95 5 COMMERCIAL FEMALES

96 5 COMMERCIAL FEMALES

97 5 COMMERCIAL FEMALES

98 5 COMMERCIAL FEMALES

99 5 COMMERCIAL FEMALES

100 5 COMMERCIAL FEMALES

101 5 COMMERCIAL FEMALES

102 5 COMMERCIAL FEMALES

103 5 COMMERCIAL FEMALES

104 5 COMMERCIAL FEMALES

105 5 COMMERCIAL FEMALES

FEMALES



VALLEY OAKS STEAK COMPANY

Valley Oaks Steak Company was founded in 2016 with the intent of bringing locally grown beef to the Kansas City area. Valley Oaks Steak Company is owned by the Ward family who have been residing in the Grain Valley Missouri area since 1946. The Ward's have been breeding registered Angus cattle since 1992 and have been privately selling beef for years. The Ward's decided that they would like to start offering their homegrown beef to the entire community.

With the addition of our local feedlot and processing plant, Valley Oaks Steak Company provides a true farm to table experience! The Valley Oaks Feedlot is state of the art allowing for all cattle to be housed under roof. The feedlot is home to cattle that carry top of the line genetics from some of the most prominent Angus cattle. With the help of engineering and big fans, the cattle are continuously at a healthy temperature. The design of the feedlot allows cattle to live in a stress-free environment and have a comfortable lifestyle. Valley Oaks Steak Company takes pride in producing top quality beef! All cattle in the feedlot must meet Valley Oaks Standards. The process Valley Oaks Steak Company

uses allows our products to be extra tender while remaining full of flavor! Every spring Valley Oaks plants their own corn to be harvested in the fall. The corn is mixed with other nutrients to create a balanced ration that is feed twice a day to the cattle..

The Valley Oaks Angus Buy Back Program is designed to help ensure that Valley Oaks Steak Company has access to some of the top steers on the market. The program also benefits the Valley Oaks Angus Bull Buyers by providing a profitable outlet for their steers. We can track data from the birthplace of the calf to the grocery stores that sell it, this helps to determine which Angus genetics make the best steaks.

Valley Oaks Steak Company is proud to produce locally grown beef that has a one of a kind flavor. Valley Oaks products benefit not only customers but local businesses as well. Valley Oaks Steak Company products can be found in local stores and markets as well as online!

Catalog designed by



Emily Brinkman, owner/designer
419.967.0141 | www.generation6.co

UNDERSTANDING EPDS

From the American Angus Association

Expected Progeny Difference (EPD), is the prediction of how future progeny of each animal are expected to perform relative to the progeny of other animals listed in the database. EPDs are expressed in units of measure for the trait, plus or minus. Interim EPDs may appear on young animals when their performance has yet to be incorporated into the American Angus Association National Cattle Evaluation (NCE) procedures. This EPD will be preceded by an "I", and may or may not include the animal's own performance record for a particular trait, depending on its availability, appropriate contemporary grouping, or data edits needed for NCE.

EPDs are enhanced by genomic results generated by:

Accuracy (ACC), is the reliability that can be placed on the EPD. An accuracy of close to 1.0 indicates higher reliability. Accuracy is impacted by the number of progeny and ancestral records included in the analysis.

\$Value Indexes, are multi-trait selection indexes, expressed in dollars per head, to assist beef producers by adding simplicity to genetic selection decisions. The \$Value is an estimate of how future progeny of each sire are expected to perform, on average, compared to progeny of other sires in the database if the sires were randomly mated to cows and if calves were exposed to the same environment.

PRODUCTION EPDS

Calving Ease Direct (CED), is expressed as a difference in percentage of unassisted births, with a higher value indicating greater calving ease in first-calf heifers. It predicts the average difference in ease with which a sire's calves will be born when he is bred to first-calf heifers.

Birth Weight EPD (BW), expressed in pounds, is a predictor of a sire's ability to transmit birth weight to his progeny compared to that of other sires.

Weaning Weight EPD (WW), expressed in pounds, is a predictor of a sire's ability to transmit weaning growth to his progeny compared to that of other sires.

Yearling Weight EPD (YW), expressed in pounds, is a predictor of a sire's ability to transmit yearling growth to his progeny compared to that of other sires.

Residual Average Daily Gain (RADG), expressed in pounds per day, is a predictor of a sire's genetic ability for postweaning gain in future progeny compared to that of other sires, given a constant amount of feed consumed.

Dry Matter Intake (DMI), expressed in pounds per day, is a predictor of difference transmitting ability for feed intake during the postweaning phase, compared to that of other sires.

Yearling Height EPD (YH), is a predictor of a sire's ability to transmit yearling height, expressed in inches, compared to that of other sires.

Scrotal Circumference EPD (SC), expressed in centimeters, is a predictor of the difference in transmitting ability for scrotal size compared to that of other sires.

Docility (Doc), is expressed as a difference in yearling cattle temperament, with a higher value indicating more favorable docility. It predicts the average difference of progeny from a sire in comparison with another sire's calves. In herds where temperament problems are not an issue, this expected difference would not be realized.

MATERNAL EPDS

Heifer Pregnancy (HP), is a selection tool to increase the probability or chance of a sire's daughters becoming pregnant as first-calf heifers during a normal breeding season. A higher EPD is the more favorable direction and the EPD is reported in percentage units.

Calving Ease Maternal (CEM), is expressed as a difference in percentage of unassisted births with a higher value indicating greater calving ease in first-calf daughters. It predicts the average ease with which a sire's daughters will calve as first-calf heifers when compared to daughters of other sires.

Maternal Milk EPD (Milk), is a predictor of a sire's genetic merit for milk and mothering ability as expressed in his daughters compared to daughters of

other sires. In other words, it is that part of a calf's weaning weight attributed to milk and mothering ability.

Herds (MkH) indicate the number of herds from which daughters are reported. **Daughters (MkD)** reflects the number of daughters that have progeny weaning weight records included in the analysis.

Mature Weight EPD (MW), expressed in pounds, is a predictor of the difference in mature weight of daughters of a sire compared to the daughters of other sires.

Mature Height EPD (MH), expressed in inches, is a predictor of the difference in mature height of a sire's daughters compared to daughters of other sires.

Cow Energy Value (\$EN), expressed in dollar savings per cow per year, assesses differences in cow energy requirements as an expected dollar savings difference in daughters of sires. A larger value is more favorable when comparing two animals (more dollars saved on feed energy expenses). Components for computing the cow \$EN savings difference include lactation energy requirements and energy costs associated with differences in mature cow size.

CARCASS EPDS

Carcass Weight EPD (CW), expressed in pounds is a predictor of the differences in hot carcass weight of a sire's progeny compared to progeny of other sires.

Marbling EPD (Marb), expressed as a fraction of the difference in USDA marbling score of a sire's progeny compared to progeny of other sires.

Ribeye Area EPD (RE), expressed in square inches, is a predictor of the difference in ribeye area of a sire's progeny compared to progeny of other sires.

Fat Thickness EPD (Fat), expressed in inches, is a predictor of the differences in external fat thickness at the 12th rib (as measured between the 12th and 13th ribs) of a sire's progeny compared to progeny of other sires.

Group/progeny (C Grp/ Pg and U Grp/Pg) reflects the number of contemporary groups and the number of carcass and ultrasound progeny included in the analysis.

\$VALUE INDEXES

\$Value indexes are multi-trait selection indexes, expressed in dollars per head, to assist beef producers by adding simplicity to genetic selection decisions. The \$Value is an estimate of how future progeny of each sire are expected to perform, on average, compared to progeny of other sires in the database if the sires were randomly mated to cows and if calves were exposed to the same environment. [More Info](#)

Weaned Calf Value (\$W), an index value expressed in dollars per head, is the expected average difference in future progeny performance for preweaning merit. \$W includes both revenue and cost adjustments associated with differences in birth weight, weaning direct growth, maternal milk and mature cow size.

Feedlot Value (\$F), an index value expressed in dollars per head, is the expected average difference in future progeny performance for postweaning merit compared to progeny of other sires.

Grid Value (\$G), an index value expressed in dollars per head, is the expected average difference in future progeny performance for carcass grid merit compared to progeny of other sires.

Quality Grade (\$QG) \$QG represents the quality grade segment of the economic advantage found in \$G. \$QG is intended for the specialized user wanting to place more emphasis on improving quality grade. The carcass marbling (Marb) EPD contributes to \$QG.

Yield Grade (\$YG) \$YG represents the yield grade segment of the economic advantage found in \$G. \$YG is intended for the specialized user wanting to place more emphasis on red meat yield. It provides a multi-trait approach to encompass ribeye, fat thickness and weight into an economic value for red meat yield.

Beef Value (\$B), an index value expressed in dollars per head, is the expected average difference in future progeny performance for postweaning and carcass value compared to progeny of other sires.

VALLEY OAKS ANGUS
35004 E. MCQUERRY RD
OAK GROVE, MO 64075



The Prime Choice
SPRING CLASSIC SALE

MARCH 10, 2018 | 12:00 PM | KINGSVILLE, MO